

# **HiJaak PRO**

Version 2.0

## **User's Guide**



**Inset Systems**

71 Commerce Drive, Brookfield, CT 06804  
203-740-2400  
Fax 203-775-5634

This manual was desktop published using Ventura Publisher Windows Edition. The screen shots were captured using HiJaak PRO.

All product names mentioned in this book are trademarked or copyrighted by their respective manufacturers.

©1993 Inset Systems Inc.  
Printed in USA.

This manual was desktop published using Ventura Publisher Windows Edition. The screen shots were captured using HiJaak PRO.

All product names mentioned in this book are trademarked or copyrighted by their respective manufacturers.

© 1993 Inset Systems Inc.  
Printed in USA.

This manual was desktop published using Ventura Publisher Windows Edition. The screen shots were captured using HiJaak PRO.

All product names mentioned in this book are trademarked or copyrighted by their respective manufacturers.

© 1993 Inset Systems Inc.  
Printed in USA.

# How to Use This Manual

**Chapter 1: Introduction and Installation** This chapter gives you a brief introduction to HiJaak PRO's features and system requirements, and then guides you through the installation procedure. Finally, it explains how to use HiJaak PRO with a mouse or a keyboard.

**Chapter 2: Getting Started** Use this chapter to learn how to view, open, close and print images in HiJaak PRO. This chapter also explains HiJaak PRO's Windows Clipboard support, and describes how to use the command line.

**Chapter 3: Changing the Look of an Image** Use this chapter to learn which file formats you can view and how to change the view, i.e., zoom in, zoom out, center the image, etc. It explains how to edit, perform image-processing, and work with colors in an image.

**Chapter 4: Converting an Image from One Format to Another** Use this chapter to learn about raster and vector formats. This chapter lists the types of files you can convert and the specific formats HiJaak PRO supports. The chapter then explains how to convert a file from one format to another.

**Chapter 5: Capturing a Windows Screen** Use this chapter to learn about the three Windows screen capture methods and when to use each. This chapter also explains how to capture full screens, a particular window or window object, or an area of the screen.

**Chapter 6: Capturing a DOS Screen or Printer Output** Use this chapter to learn how to capture DOS screens. This chapter also explains how to use HiJaak PRO to capture data sent by your software application to your printer.

**Chapter 7: Changing Your Setup** Use this chapter to change your HiJaak PRO setup. This chapter shows you how to configure HiJaak PRO for use with your fax card. This chapter also explains how to use "set files" to customize your file conversions. Finally, it guides you through changing defaults such as background color, displayed palette, color reduction method, and curve quality.

**Chapter 8: Using HiJaak PRO in Your Work** Use this chapter to learn how to use HiJaak PRO with both your software applications and your graphics hardware. This section provides information on using Object Linking and Embedding, TWAIN, Drag-Drop, and HiJaak import filters.

**Chapter 9: Technical Support** Use this chapter to assist in obtaining quick and efficient help from your system vendor.



# Introduction and Installation

---

## Overview

This chapter provides a brief introduction to HiJaak PRO features, the system requirements for running the program, and instructions for installing it. It also describes how to use a mouse or keyboard to move around in HiJaak PRO.

---

## Introduction to HiJaak PRO

You can use HiJaak PRO to:

- View, edit, and image-process a file
- Convert a file from one format to another
- Capture a screen
- Print an image
- Organize your graphics files

**VIEWING A FILE** -- You can use HiJaak PRO to view images if your images are stored in any of the source formats supported by HiJaak PRO. Viewing your images before you convert them lets you see if the source image is as you want it. For a list of the formats supported by HiJaak PRO and for more information about viewing a file, see [Chapter 2: Getting Started](#).

EDITING A FILE -- Once you are viewing an image, you can use the HiJaak PRO Edit menu for:

- Cutting and pasting it to and from the Windows Clipboard
- Cropping it
- Changing a color
- Changing a font (in a vector file with text, or a DOS text screen capture)

PROCESSING AN IMAGE — Depending on the format, you can select from over 20 image processing options, including:

- Smoothing
- Distort Aspect
- Height and Width
- Horizontal and Vertical Resolution
- Rotation
- Number of Colors
- Color Reduction Method
- Palette Optimization
- Invert Colors
- Reveal Background Color Objects
- Reverse Black and White
- Halftone Screen Frequency
- Histogram Equalization
- Contrast
- Brightness
- Gamma Correction



**CONVERTING A FILE FROM ONE FORMAT TO ANOTHER** -- HiJaak PRO allows you to convert to and from more than 70 formats. HiJaak PRO can also choose the best file format for one of many popular software applications.

**CAPTURING A SCREEN** -- HiJaak PRO allows you to capture either Windows or DOS screens and save them in any of HiJaak PRO's supported raster file formats. Also, DOS text mode screens can be saved in vector formats.

**PRINTING AN IMAGE** -- HiJaak PRO allows you to print any image you can view, and it supports all Windows printers.

**ORGANIZING GRAPHICS FILES** -- HiJaak PRO provides the HiJaak Browser utility to help you organize and update your graphics files. See your HiJaak Browser documentation for more information.

## Installation

### System Requirements

**COMPUTER:** You will need an IBM PC or compatible with a 286 (minimum), 386, or 486 microprocessor and Microsoft Windows version 3.1 or later, running in standard or enhanced mode. A math co-processor will speed up DXF and PCL conversions substantially.

*Note: You need a 256 color display mode to use some color processing functions.*

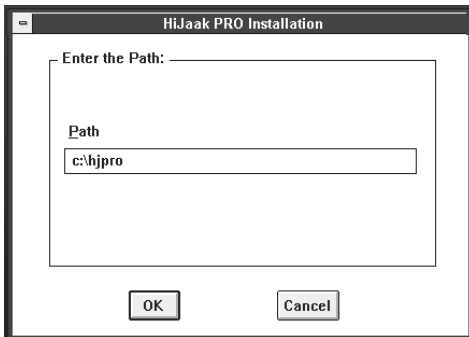
**DISK DRIVES:** You will need a hard disk with at least 6 megabytes of free disk space to store the HiJaak PRO program. If you are using HiJaak PRO to convert files from one format to another, you will need enough additional disk space to store both your source files and the files you will create.

#### How to Install from the Windows Program Manager

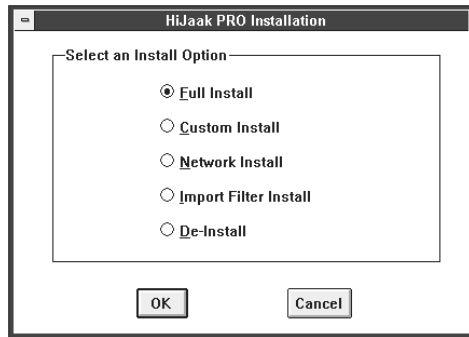
- 1 Run Windows as you normally would.
- 2 From the Windows Program Manager, pull down the File menu and click on Run. You will see the Run dialog box.
- 3 Put the diskette labeled Disk 1 in the a: drive or the b: drive.

*Step 5: Registration Screen*

- 4 Type the following:  
 a: \install  
 If you put your diskette into drive b: in Step 3, type the following:  
 b: \install  
 Click on OK.
- 5 You will see a screen informing you that HiJaak PRO is loading the install program, then you will see the Registration screen. Click on the Name area and type your name. Click on the Company Name area and type your company name.
- 6 Click on the Registration Number area and type the registration number found on the registration card in the front of this manual.



*Step 8: Target Drive Dialog Box*



*Step 9: Install Options Dialog Box*

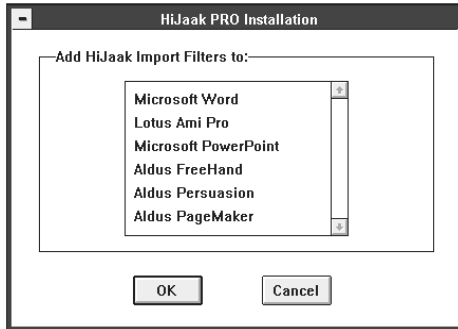
7 Click on OK. If you entered an invalid registration number, you will receive a message that you entered an incorrect number, and you will be allowed to try again. Once you enter a valid registration number, you will see the Target Drive dialog box.

8 In the Target Drive dialog box, type the drive and path where you wish to install HiJaak PRO. The default is C:\HJPRO. Click on OK.

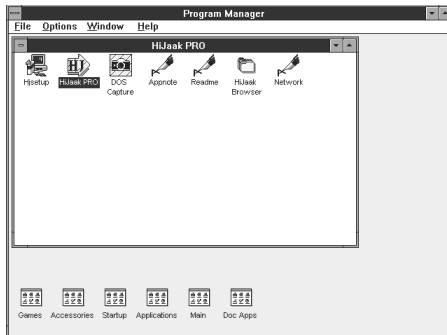
9 You will see the Install Options dialog box which has choices of Full, Custom, Network, Import Filter, and De-Install. Click on either Full Install, Custom Install, or Network Install. Full Install installs all the HiJaak PRO files that come with the product. Network Install, Import Filter Install, and De-Install are described later in this chapter. Custom Install allows you to select any or all of the following installation options:

- DOS CAPTURE** -- Installs all files necessary to capture DOS screens. When you select this option and click on OK, you will see the DOS Capture Screen Fonts dialog box. Click on Code Page 850 Fonts if you are capturing screens with European language text screens. Otherwise, select U.S. Fonts.
- HP PCL 4 INTERPRETATION** -- Installs all files necessary to convert files to or from the HP LaserJet Series II PCL 4 format.
- SAMPLE GRAPHICS** -- Installs all sample graphics files.
- APPLICATION INTERFACES** -- Installs links from HiJaak PRO to many Windows applications.

*Note: Custom Install is useful if you wish to save disk space.*



*Step 10: Add Import Filter Dialog Box*



*Step 11: HiJaak PRO Program Group*

- 10 The installation procedure begins. Follow the directions on your screen.

If you selected Full Install or Custom Install and Application Interfaces, you will see the Add Import Filters dialog box, with a list of supported applications found. Click on the application name to which you want to add import filters. Adding import filters will modify your application INI file, your WIN.INI file, or both. Click on OK to continue with installation.

- 11 When installation is complete, you will see the HiJaak PRO program group and icons. A message box will ask you if you want to read the Release Notes. These important notes include information on menu changes and enhancements in HiJaak PRO. Click on Yes to read the Release Notes.

*Note: If you intend to use HiJaak PRO with a fax card, see [How to Configure HiJaak for Your Fax Card in Chapter 7: Changing Your Setup](#).*

## Printer Setup

Since HiJaak PRO is a Windows application, it will print to any of the printers you have set up in Windows. Refer to your Windows manual for information on printer setup.

## Technical Notes

The HJPRO subdirectory contains last-minute and advanced technical information in Windows Write (\*.WRI) files. This includes information about Application Program Interfaces (APIs).

## Installing on a Network

Additional information on setting up HiJaak PRO on a network is available in the Windows Write file NETWORK.WRI, located in the HJPRO subdirectory.

HiJaak PRO has only been tested in Novell Netware 3.11; therefore all information in this section pertains to a Novell Netware 3.x network. Information on other networks may vary.

*Note: Your server must run Windows 3.1 or later in standard or enhanced mode.*

### How to Install on a Network Server

- 1 From a workstation, log on to the network and connect to the drive on which you want to install HiJaak PRO. You must have write rights to this directory.
- 2 Run Windows on the network server.
- 3 From the Windows Program Manager, pull down the File menu and click on Run. You will see the Run dialog box.
- 4 Put the diskette labeled Disk 1 in the a: drive or the b: drive.
- 5 Type the following:

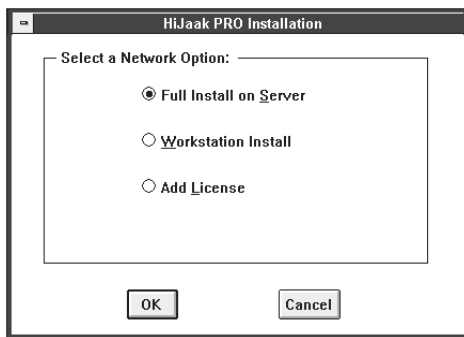
a:\install

If you put your diskette into drive b: in step 4, type the following:

b:\install

Click on OK.

- 6 You will see a screen informing you that HiJaak PRO is loading the install program, then you will see the Registration screen. Click on the Name area and type your name. Click on the Company Name area and type your company name.
- 7 Click on the Registration Number area and type the registration number given to you with your Concurrent Use License. This number tells HiJaak PRO how many concurrent uses are allowed.
- 8 Click on OK. If you entered an invalid registration number, you will receive a message that you entered an incorrect number, and you will be allowed to try again. Once you enter a valid registration number, you will see the Target Drive dialog box.
- 9 Type in the drive and path where you want to install HiJaak PRO. You should install it in a directory that will be read-only for your users. Click on OK.
- 10 You will see the Install Options dialog box. Click on Network Install. Click on OK.



*Step 11: Network Install Options*

- 11 You will see the Network Install Options dialog box. Click on Full Install on Server. Click on OK. You will see the DOS Screen Capture Fonts dialog box. If you need to capture text mode screens with text in European languages, click on the Code Page 850 radio button. Code Page 850 fonts override U.S. fonts, and once selected, are in effect network-wide.
- 12 The installation begins. Follow the directions on your screen.
- 13 You will see the Add Import Filters dialog box, with a list of supported applications found. Click on the application names to which you want to add import filters. Adding import filters will modify your application INI file, your WIN.INI file, or both. Click on OK to continue with installation.

- 14 When installation completes, you will see the HiJaak PRO program group and icons. You will be prompted to read the Release Notes. These important notes include information on menu changes and enhancements in HiJaak PRO. Click on Yes to read the Release Notes.
- 15 Follow the procedure below to install HiJaak PRO on each workstation.

#### How to Install on a Workstation

- 1 From the workstation on which you want to install HiJaak PRO, log on to the network and run Windows.
- 2 From the Windows Program Manager, pull down the File menu and click on Run.
- 3 You will see the Run dialog box. Type your path to HiJaak PRO followed by HJSETUP. For example:

n:\hjpro\hjs etup

Click on OK.

- 4 You will receive a message verifying the location of your HJPRO directory. Click on OK to continue installation.
- 5 You will see the Install Options dialog box. Click on Network Install. Click on OK.
- 6 You will see the Network Install Options dialog box. Click on Workstation Install. Click on OK.
- 7 You will see the Add Import Filters dialog box. Click on the application names to which you want to add import filters. Adding import filters will modify your application INI file, your WIN.INI file, or both. Click on OK to continue with installation.
- 8 The HiJaak PRO program group and icons are added to your workstation.



## Removing HiJaak PRO

There are two ways to de-install HiJaak PRO: Workstation and Stand Alone / Network Server. Use the Workstation de-install if HiJaak PRO is running on a network, and you want to remove only references to it from your Windows .INI files and Registration Database. To do this, double-click on the HJSetup icon. In the Install Options dialog box, click on the De-Install button. In the De-install dialog box, click on the Workstation button. Use the Stand Alone / Network Server de-install if you want to remove all HiJaak PRO program files as well as remove HiJaak PRO from your Windows files. To do this, insert HiJaak PRO Disk 1, run the install program as described earlier in this chapter, select De-install and click on the Stand Alone / Network Server button.

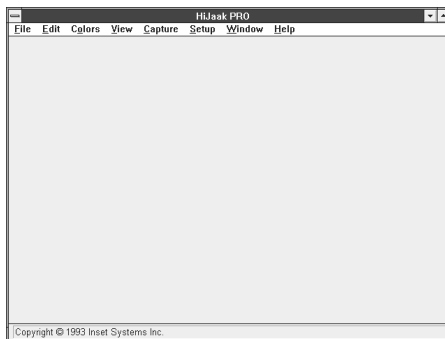
## Installing Import Filters

If you select Full Install, Network Install, or Custom Install with Application Interfaces, HiJaak PRO automatically installs import filters for applications that you select. If you install one of the supported applications after you've installed HiJaak PRO, you will have to install import filters separately. Double-click on the HJSetup icon in the HiJaak PRO program group. You will see the Install Options dialog box. Click on Import Filter Install. You will see the Add Import Filter dialog box. Click on the check box next to the applications to which you want to add import filters. Adding import filters will modify your application INI file, your WIN.INI file, or both. Click on OK to install the filters.

---

## Running HiJaak PRO

**A**fter installing HiJaak PRO as described above, double-click on the HiJaak PRO icon. You will see the HiJaak PRO Main screen.



*HiJaak PRO Main Screen*

---

## Using a Mouse or the Keyboard

**H**iJaak PRO adheres to the interface standards of Microsoft Windows 3.1. If you have Windows 3.1 installed on your system, you may notice that many dialog boxes are common to your applications. If you are familiar with other Windows applications, most of the dialog boxes will be easy to understand. Throughout this manual, the instructions assume that you are using a mouse. You can, however, use the keyboard. The instructions below show you how to move around in HiJaak PRO using either the mouse or the keyboard.

*Note: You will notice that after you select certain options, the cursor changes to an hourglass and arrow icon. This cursor indicates that although HiJaak PRO is processing your last command (hourglass), it will still allow you to select other options and commands (arrow). Your commands will be executed in the order you give them. Cancel will only affect the currently executing process.*

To start HiJaak PRO from the Program Manager:

**MOUSE:** Double click on the HiJaak PRO icon.

**KEYBOARD:** To move between groups, press Ctrl + Tab. Use the arrow keys to highlight the HiJaak PRO icon. Press Enter.

To pull down a menu in HiJaak PRO:

**MOUSE:** Click once on the menu you wish to pull down.

**KEYBOARD:** Notice the underlined letter on the menu command you wish to pull down. Press the Alt key and your letter of choice simultaneously. For example, to pull down the File menu, press Alt + F.

To select a pull down menu item:

**MOUSE:** Click once on the menu item.

**KEYBOARD:** Use the arrow keys to highlight the menu item you wish to select. Press Enter. If you pull down the File menu, you will notice the keystroke combination Ctrl + O to the right of Open. Such keystrokes are shortcuts that you can use from anywhere in the program to open a file.

To move around in a dialog box:

**MOUSE:** Click once on the area you wish to edit. If you wish to pull down a box to scroll through selections, click on the down arrow to the right of the selection. If the area is a text-only field, click once in the text entry area, then type in your text.

**KEYBOARD:** Use the Tab key to move to the area you wish to edit. Use the arrow keys to scroll through the selections.

To accept all changes you have made to a dialog box:

**MOUSE:** Click on OK.

**KEYBOARD:** Press Enter.

To exit a dialog box without accepting changes:

**MOUSE:** Click on Cancel.

**KEYBOARD:** Press Esc.



# Getting Started

This chapter explains basic file operations, such as Open, Save, Print and Close. Windows Clipboard Cut, Copy, Copy As, and Paste are also described.

---

## Opening the Image You Want to View

HiJaak PRO allows you to open:

- Files
- Windows clipboard images
- Screens you have captured

The following section describes how to open a file. For information on pasting from the clipboard, see [Windows Clipboard Support](#) later in this chapter. For information on screen capture, see [Chapter 5: Capturing a Windows Screen](#).

*Note: Throughout this manual, the “active image” will be mentioned. The title bar of the active image will be highlighted. If you open images on top of each other, you can only change or edit the active image, which is the one on top. If you have several images on the screen, you can bring any image to the top and make it active by clicking on it. If you are using the keyboard, press Ctrl+ Tab to switch active windows.*

You can open an image if it is in one of the source formats listed in the table on the following page.

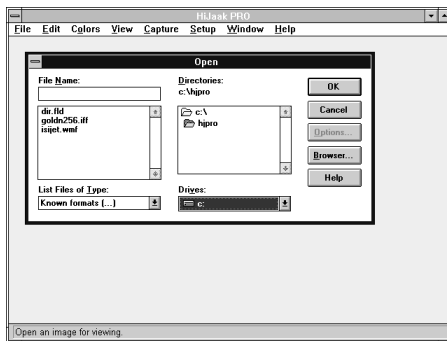
Table of Supported Formats

VECTOR		RASTER		FAX (Raster)	
AI	Encapsulated PostScript (dest. only)	ATT	AT&T Group 4	F01	AdTech
CGM	Computer Graphics Metafile	BMP	Windows/ OS/2 Bitmap	301	Brooktrout Fax-Mail
DRW	Micrografx Draw	CAL	CALS Raster	001	Calculus EZ-Fax
DXF	AutoCAD	CPR	Knowledge Access (source only)	001	Complete FAX Portable
EPS	Encapsulated PostScript (dest. only)	CUT	Dr. Halo	001	Complete FAX
GCA	IBM GOCA	DBX	DataBeam	FAX	Everex EFAX 2
GEM	GEM Metafile	DIB	Windows/ OS/2 Bitmap	FAX	Everex EFAX 3
IGF	Inset Systems IGF	ED5	EDMICS	FAX	Frecom FAX96
MCS	MathCAD (dest. only)	EPS	Encapsulated PostScript (dest. only)	FAX	Fujitsu dexNET
MET	PM Metafile (dest. only)	GED	Wicat	TIF	GammaLink
PCT1	Macintosh PICT (source only)	GIF	CompuServe	FAX	Generic Fax
PCT2	Macintosh PICT	ICA	IBM IOCA	001	Hayes JT Fax
PIC	Lotus	ICO	Windows Icon	FFF	JetFax
PIX	Inset Systems PIX	IFF	Amiga ILBM	DCX	Intel
PGL	HP 7475A Plotter	IGF	Inset Systems IGF	OAZ	Net Fax Manager
P10	Tektronix Plot 10 (source only)	IMG	GEM Paint	F01	Product R&D Fax Modem
TXT	ASCII Text	JPG	JPEG	FAX	Relisys TEFAQ
WMF	Windows Metafile	KFX	Kofax Group 4	001	Ricoh
WPG	WordPerfect Graphic	MAC	MacPaint	SCI	SciFAX
		MSP	Microsoft Paint	001	SMARTFAX
		PCD	Photo CD	DCX	SpectraFAX
		PCL4	HP LaserJet II	F01	TriGem
		PCX	PC Paintbrush	001	WorldPort
		PCT1	Macintosh PICT (source only)	FAX	Xerox MicroFax
		PCT2	Macintosh PICT		
		PIX	Inset Systems PIX		
		RAS	Sun Raster		
		SBP	IBM Storyboard PIC (source only)		
		TGA	Truevision		
		TIF	TIFF		
		WPG	WordPerfect Graphic		

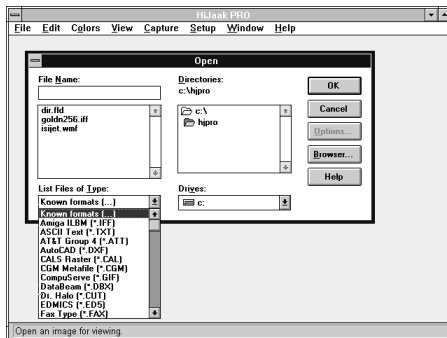
## How to Open a File

*Note: Throughout this manual the word "ghosted" will be used to describe a grayed out selection on the screen. A selection is ghosted when the operation is not available.*

- 1 Pull down the File menu. Click on Open. You will see the Open dialog box.



Step 1: Open dialog box



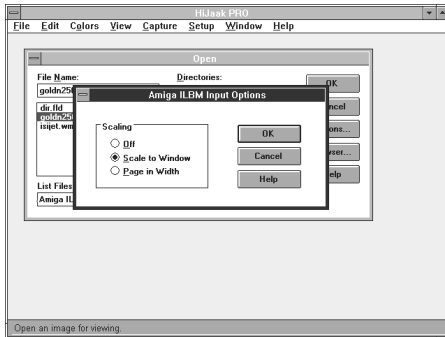
Step 5: Pull down List Files of Type

- 2 [OPTIONAL] If you would like to use the HiJaak Browser to search for and open an image, click on the Browser button. You will see the HiJaak Browser Main screen. See your HiJaak Browser documentation for more information.

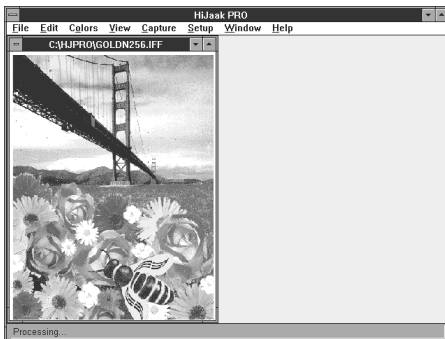
- 3 In the Drives area of the dialog box, click once on the down arrow to pull down the Drives list, then click on the drive that contains the file you wish to view.

- 4 In the Directories area of the dialog box, click on the subdirectory that contains the file. Notice that the current directory is shown right under the word Directories. To move "up" in the directory tree, double-click on the level to which you wish to move. To move "down" in the directory structure, double-click on the subdirectory. If, for example, your current directory is C:\HJPRO, but the file you want to open is in C:\IMAGES, you would double-click first on C:\ then on the IMAGES subdirectory.

- 5 In the List Files of Type list box, pull down and select the file type. The Options button will become available. If your file type is on the list, but your extension is not, see [Format Extensions in Chapter 7: Changing Your Setup.](#)



Step 6: Source Options dialog box



Step 7: Viewing the Image

- 6 [OPTIONAL] If you wish to set options, click on the Options button. You will see the Source Options dialog box.

Auto Scale options are available to all raster formats, and affect how an image appears in various scaling situations. For more information, see [Chapter 3: Changing the Look of an Image](#).

Other source options available to you will depend upon the type of file you are opening. If you have any questions about specific options on your screen, click on Help. You will see a list of options. Click on a particular item for more information.

- 7 If you have set options, click on OK to return to the Open dialog box. In the File Name area of the screen, click on the file you wish to open. Click on OK. The source image will appear on the screen.

*Note:* HIJaak PRO allows you to open multiple images. In the Open dialog box, hold down the Ctrl key while you click on the files in the File Name area that you wish to open. The images will appear on the screen in the order in which they appear in the list box.

*Note:* The image you are viewing may be limited by your Windows graphics mode. For example, if you are viewing an image with 256 colors while running Windows in 16 color mode, you will not be viewing the image exactly as it is. HIJaak PRO will display the image using the closest available colors.



## Getting Information on the File You Have Opened

To get information on the active image, pull down the File menu and click on Info.

When HiJaak PRO opens an image, it reads information on the file's format, size, and file date. This information is displayed in the Info dialog box in addition to width and height in pixels and number of colors if the image is raster, and vertical and horizontal resolution.

Note that this information changes only after you change the file, save it, and open the changed file.

## Saving Your Editing Changes

If you have made changes to an image, you can save them by pulling down the File menu and clicking on Save. This will replace your original image with the edited version. If you wish to save the image under a new name or format, pull down the File menu and click on Save As. This will create a new file, and your original image will remain intact.

## Closing the File

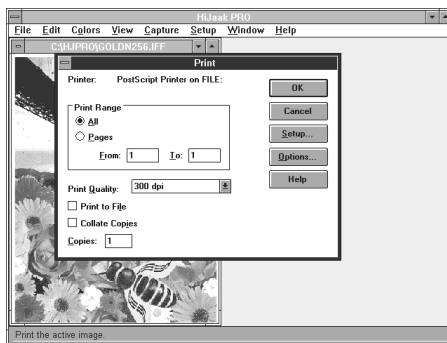
To close the active image, pull down the File menu and click on Close. To close all images, pull down the File menu and click on Close All. If you wish to Exit at this point, pull down the File menu and click on Exit.

## Printing the View

**H**ijaak PRO allows you to print the active view. You can change the position and size of the image on the printed page. If you have edited the image, the edited view will print. If you want to print just an area of the image, you must first crop it.

### How to Print the View

1 Make sure the image you wish to print is on the screen and active.



*Step 2: Print dialog box*

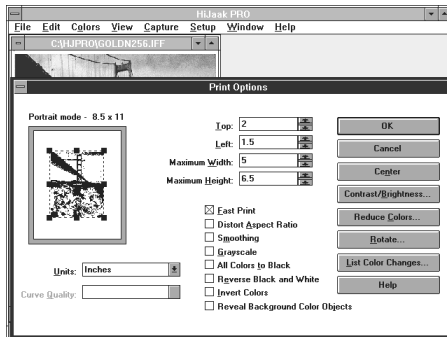
2 Pull down the File menu and click on Print. You will see the Print dialog box.

3 Make sure the appropriate printer has been specified. If you wish to select another printer, click on Setup and specify the printer before going on to step 4.

4 For multi-page images, in the Print Range area click on All to print all pages, or Pages to print a range of pages. If you select Pages, enter the beginning and ending page in the From and To areas.

5 If you are printing to a printer that supports adjustable print quality, you can select High, Medium, or Low print quality in the Print Quality area. If your printer does not support these print quality choices, you will see a dots per inch (dpi) value in this field.

6 If you are printing to a file, click on Print to File. If you do this, you will be prompted for a filename.



Step 7: Print Options dialog box

7 [OPTIONAL] If you would like to select from available options, click on the Options button. You will see the Print Options dialog box. Print options only change the printed image, not the display or file. These options are described below. When you have finished selecting options, click on OK.

8 Click on OK to print.

## Print Options

*Note: In the Print Options dialog box, you will see a box representing your page and within this box, a thumbnail representation of your image. As you change size and position, this thumbnail will change in relation to the page. You may position the image by clicking on the thumbnail and dragging it to a new position on the page. You may resize the image by clicking on one of the sides or corners and dragging.*

The following options are available in the Print Options dialog box:

- Fast Print** -- To select this option, click on the Fast Print check box. Fast Print allows the printer to handle color processing and scaling of a file, thereby allowing it to print faster.
- Top and Left** -- HiJaak PRO centers the image on the printed page by default, but allows you to change that position. You cannot position any part of the printed image off the page. To change position, use the Top and Left options. Click in the Top area and type the number of units you want the image offset from the top of the page. Click in the Left area and type the number of units you want the image offset from the left side of the page.
- Center** -- Click on the Center button to reset the image in the center of the page.

- Maximum Height and Width** -- By default, HiJaak PRO prints your image 7" tall by 5" wide, but allows you to change the size by specifying height and width for the printed image. You cannot make the image larger than the page. To change width, click in the Maximum Width area and type a new width for the image. To change height, click in the Maximum Height area and type a new height for the image.

*Note: HiJaak PRO maintains the aspect ratio of the image when you change its height or width. This means if you have an image 2 inches tall and 2 inches wide, you can only change the size to 1 by 1, 3 by 3, 4 by 4, etc. If you want to change the aspect ratio, click in the Distort Aspect Ratio check box. You will then be allowed to resize the image any size smaller than the page size, but the image will be distorted*

The following options are also available and are described in Chapter 3: Changing the Look of an Image.

- Units
- Smoothing
- Grayscale
- Colors to Black
- Reverse Black and White
- Invert Colors
- Reveal Background Color Objects
- Contrast/Brightness...
- Reduce Colors...
- List Color Changes...
- Rotate...
- Curve Quality

---

## Windows Clipboard Support

**H**iJaak PRO allows you to cut, copy, and paste images between HiJaak PRO and the Windows Clipboard.

You can cut or copy to the Clipboard and open another application without closing HiJaak PRO. Then, when you paste in that application, HiJaak PRO will provide the image in the format requested by the pasting application. This process is called delayed rendering. You can also copy an image to the Clipboard in one of several formats of your choice. If you cut or copy an image, and then attempt to exit HiJaak PRO, you will be asked in what format you wish to save the Clipboard image.

### How to Cut an Image to the Windows Clipboard

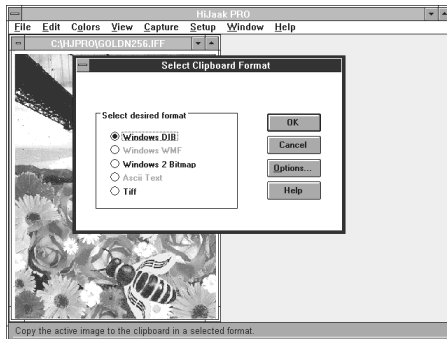
- 1 Pull down the Edit menu and click on Cut.
- 2 The current image will be copied to the Windows Clipboard and the current HiJaak image window will close.

### How to Copy an Image to the Windows Clipboard

- 1 Pull down the Edit menu and click on Copy.
- 2 The current image will be copied to the Windows Clipboard and the current HiJaak image window will remain open.

## How to Copy an Image to the Windows Clipboard in a Selected Format.

- 1 Pull down the Edit menu and click on Copy As. You will see the Select Clipboard Format dialog box.



Step 2: Select Clipboard Format

- 2 You can select a raster format if your file is a raster image, and a vector or a raster format if your file is a vector image. Click on a format appropriate for your image.
- 3 Click on the Options button to select processing options. For information on processing options, see Chapter 3: Changing the Look of an Image.
- 4 Click on OK. The current image will be copied to the Windows Clipboard in the format that you selected, and the current HiJaak PRO window will remain open.

*Note: HiJaak PRO registers the image when you cut or copy to the clipboard. "Registering" means that HiJaak PRO becomes ready to convert the image to any HiJaak-supported format requested by the pasting application. If you exit HiJaak PRO directly after a copy or cut, you will see the Select Clipboard Format dialog box, just as if you had selected Copy As. Select the format to use for rendering and click on OK. HiJaak PRO copies the image to the clipboard and exits.*

## How to Paste into HiJaak PRO from the Windows Clipboard

- 1 Make sure that an image is available in the Windows Clipboard.
- 2 Pull down the Edit menu and click on Paste.
- 3 HiJaak PRO will create a new image window, titled "Paste," and paste the clipboard image there.
- 4 To give the image a name, pull down the File menu and click on Save As.

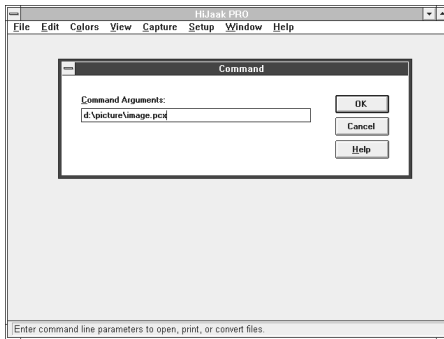
## Using Command Line Mode

### Viewing an Image from the Command Line

HiJaak PRO has a utility that allows you to view an image from the command line. The advantage of this method is that it is quick if you know the path of the file you wish to view.

#### How to Open an Image Using the Command Line

- 1 From the HiJaak PRO Main screen, pull down the File menu and click on Command. You will see the Command dialog box.



*Step 1: Command Dialog Box*

- 2 Type the path and name of the file you wish to view. All wildcards that you can use in DOS, you can use to view from the command line. For example, if the file you want to view is IMAGE.PCX, in the picture directory on the d: drive, then you should type:

d:\picture\image.pcx

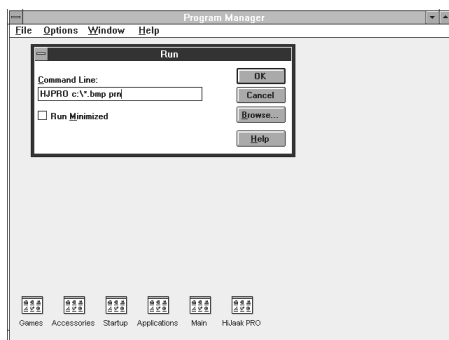
- 3 Click on OK.

**Note:** You can also use command line mode from Windows Program Manager by pulling down the File menu and clicking on Run. Then type **hjpgro** followed by the command line as described in step 2.

## Printing a File From the Command Line

How to do Command Line Batch Printing

- 1 Click on either the Run command in the Windows Program Manager or the Command selection on the HiJaak PRO File menu.



*Step 2: Printing files from the Program Manager*

- 2 Type HJPRO [source filename] PRN. All wildcards that you can use in DOS, you can use to print from the command line. The complete syntax for command line printing is:

HJPRO [path/source.ext] PRN

For example, if you want to print all the BMP files in the root directory of the C drive, you should type:

HJPRO c:\\*.bmp prn

- 3 Click on OK.

*Note: When using the HiJaak PRO Command Line, use of HJPRO as part of the command is optional.*



## Changing the Look of an Image

You can use HiJaak PRO to view and edit images. You might want to view an image before converting it — to make sure that it looks as you expect it to look. You can also edit and process the image. In HiJaak PRO, “editing” means:

- Cropping
- Rotating
- Changing size
- Changing fonts in a vector image

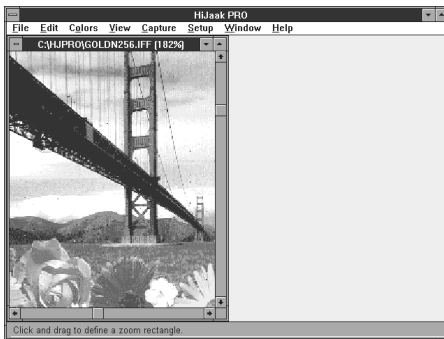
“Image Processing” refers to the features that change image quality, such as contrast, brightness, and palette optimization. HiJaak PRO also allows you to change colors in your image. You can view, edit, and process your images if they are stored in any of the source supported formats listed in [Chapter 2: Getting Started](#).

## Changing the View

Notice that when you place the cursor over an open image and press the mouse button, the cursor changes to a magnifying glass. When you see the magnifying cursor, hold the mouse button, drag the mouse, and release the button to zoom in on a particular area of the image. The image below shows a zoomed in view of the example image.

As you change and resize the image, HiJaak PRO will resize the image without distorting it or adding any white space to it. If you wish to stretch the image as you stretch its window, you should select the [Auto Scale](#) option as described later in this chapter.

**Note:** *Some images have a white border. HiJaak PRO will not add any white space to that border, but it will be visible when you view the image. Some example images in this manual have this type of border.*



*Zoomed In Image*

**Note:** *Changing the view will change the display without changing the file. Editing the image and working with colors in the image will change the display and change the file once you save it. Editing and working with colors are described later in this chapter.*

To change the view, pull down the View menu. HiJaak PRO allows you to change the view in the following ways:

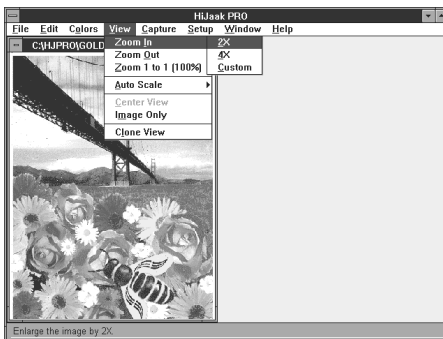
- Zoom In** — zoom in on a part of the image that you specify.
- Zoom Out** — zoom out (if you have loaded a large image) or zoom back out after you have zoomed in.

- Zoom 1 to 1** — reset the scale factor back to 100%.
- Auto Scale** — resize the image to fit in the window, in the width of your screen, or to maintain its original size as you change the window size.
- Center View** — see the image centered around a point you select.
- Image Only** — see the image alone on the screen.
- Clone** — create a new window identical to the current image window.

Each of these viewing options is described in detail below.

### How to Zoom In

- 1 Make sure the image you wish to zoom in on is on the screen and active.

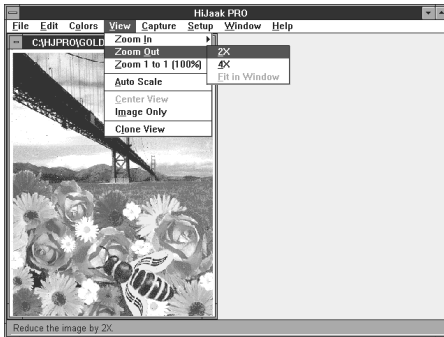


*Step 2: Zooming In*

- 2 Pull down the View menu and click on Zoom In. You will see a side menu.
- 3 Click on 2x, 4x, or Custom. If you click on 2x, the image will become two times larger with the center point maintained. If you click on Custom, click and drag the mouse to define the custom area you wish to enlarge. To “undo” the zoom, click the right mouse button once or press Esc.

## How to Zoom Out

1 Make sure the image you wish to zoom out on is on the screen and active.



2 Pull down the View menu and click on Zoom Out. You will see a side menu allowing you to zoom out to make the image two times smaller, four times smaller or Fit in Window. If you select Fit in Window, HiJaak PRO will zoom out until the uncropped image fills the window.

3 Click on 2x, 4x or Fit in Window. To “undo” zoom out, place the cursor over the image and click the right mouse button once or press Esc.

Step 2: Zooming Out

## How to Reset the Image to a Scale Factor of One

When you zoom in or out on an image, the scale factor changes. To reset the scale factor back to 100%:

1 Make sure the image you wish to reset is on the screen and active.

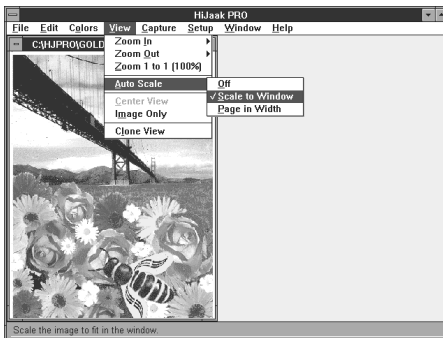
2 Pull down the View menu and select Zoom 1 to 1 (100%). The image scale factor will be set to 100%. Your Auto Scale option will be set to Off. For more information on auto scaling, see below.

**Note:** Whenever you view a raster image, a scaling factor indicating percent scaled will appear in the image title bar next to the image name. For information on raster images, see [Chapter 4: Converting a File from One Format to Another](#).

## How to Scale the View

HiJaak PRO allows you to select how the image will appear on the screen in various scaling situations. Aspect Ratio will not be distorted in any of these scaling options.

- 1 Pull down the View menu and click on Auto Scale.
- 2 You will see a side menu with the following items: Off, Scale to Window, and Page in Width. Click on the scaling option you want to use. A check will appear next to the selected item.



Step 2: Scaling

- Off**— This option may restrict your view of certain portions of the image as the window size and shape are changed. This option is useful if you wish to avoid any scaling of your image.
- Scale to Window**— This option allows images to fit in the Main window when the Main window size is changed, with the viewed portion scaling to the window. It is useful if you want to view the entire image in your Main window. Scale to Window requires additional processing time over the Off selection.
- Page in Width**— This option allows images that are normally larger than your Main screen to view in the width of your screen. It is useful if you are viewing faxes or other page oriented images. Page in Width requires additional processing time over the Off selection.

### How to Center the View

To change how a viewed image is centered:

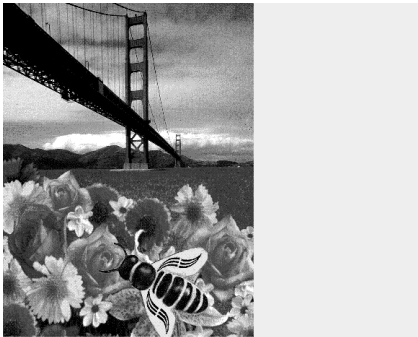
- 1 Make sure the image you wish to center is on the screen and active.
- 2 Pull down the View menu and click on Center View.
- 3 Position the mouse cursor at the point around which you want the image to be centered. Double-click the left mouse button. HiJaak PRO will re-draw the image around the center point you have specified.

**Note:** *Because HiJaak PRO will not put white space around images, if you position the center point near an edge, the center point will be adjusted to ensure that the view will not go beyond the edge of the image.*

### How to Make the Image Appear Alone on the Screen

To see your image full-screen without the frame, title-bar, menu, and status bar:

- 1 Pull down the View menu and click on Image Only. You will see the image full-screen.
- 2 To return to HiJaak PRO, click the mouse button once or press the Esc key.



*Step 1: Image Only*

## How to Create a Clone of the Current Image

You might wish to clone an image if you are experimenting with image processing options. For example, you might open an image and make a few editing changes. If you then decide to experiment with changing contrast, for example, you can clone the image and use the clone as a test image.

- 1 With the image you want cloned active, pull down the View menu and click on Clone View.



*Step 2: Cloned Image*

- 2 HiJaak PRO will create a second window which also contains the current image. The title bar will be the same as the original, with a ":" and a number appended to it. If, for example, your original image was GOLDN256.IFF, then your cloned image would be GOLDN256.IFF:2. Click on the title bar of the image to make it active. If you are using the keyboard, press Ctrl + Tab.

---

## Viewing Multi-page Images

If you are viewing a multi-page image, you can move to the next or previous page using the keyboard. The Page Up and the Page Down keys let you move through the multi-page image. The Ctrl + Page Up and Ctrl + Page Down keys let you move to the top of the previous page, and to the top of the next page respectively. The Home key brings you to the top of the current page. The End key brings you to the bottom of the current page. The Ctrl + Home and Ctrl + End keys bring you to the top of the first page and the bottom of the last page, respectively.

---

## Editing the View

So far in this chapter, all options have changed the view without changing the file. "Editing" allows you to change the file and thus make the changes permanent. For example, you may want to crop an image or change a color before converting an image. The editing options allow you to do this.

**Important:** *HiJaak PRO has "sticky" editing features. This means if you change the color or the font in a file of a particular format, when you open other files of that format or convert to that format, those changes will "stick" - or be done automatically. If you do not want the changes to affect subsequent editing or conversion sessions, you should use a special custom-made "set file." For more information on set files, see Loading and Saving Set Files in Chapter 7: Changing Your Setup.*

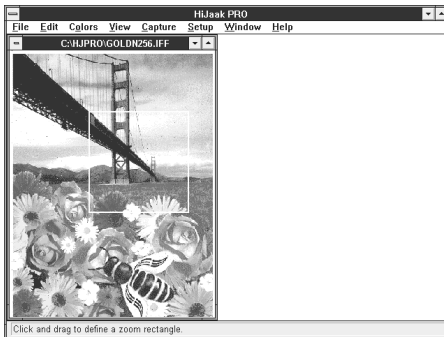
HiJaak PRO allows you to edit the view in the following ways:

- Crop** — clips the image to a rectangular area that you specify.
- Rotate** — rotates the image from 0 to 360 degrees.
- Resize** — allows you to change the size of raster images.
- Change a Font** — allows you to change text fonts in vector images.
- Undo** — undoes the last editing operation you performed.
- Undo All** — undoes all editing operations you performed on a vector image.



## How to Crop an Image

- 1 Pull down the Edit menu and click on Crop. The cursor changes to the scissors icon. If you choose to cancel this function now, press the Esc key. Your cursor changes back to the arrow icon.



*Step 3: Defining the Crop Area*

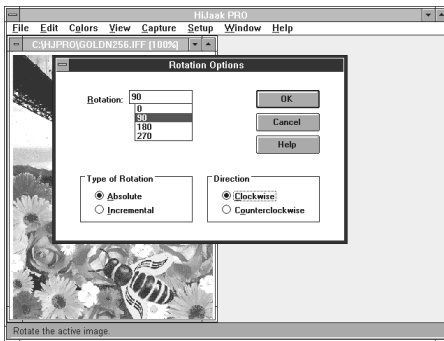
- 2 Move the mouse cursor to any corner of the area you wish to crop.
- 3 Click and drag the mouse to define the area you wish to keep after cropping.
- 4 When you let go of the mouse button, the area outside the boundary you have defined will be removed.



*Step 4: The Cropped Area*

## How to Rotate an Image

- 1 Pull down the Edit menu and click on Rotate. You will see the Rotation Options dialog box.



*Step 1: Rotation Options Dialog Box*

- 2 In the Type of Rotation field, click on Absolute or Incremental. Absolute rotates the image from point zero. Incremental rotates the image from its current location. For example, suppose you have rotated an image 90 degrees. After viewing it, you decide you would like to view it at 270 degrees. If you have Absolute selected, you will need to enter 270 into the Rotation field. If you have Incremental selected, you will need to enter 180 into the Rotation field —  $90+180=270$ .

- 3 In the Direction field, select Clockwise or Counterclockwise.

- 4 In the Rotation field, click on 0, 90, 180, or 270 degrees, or enter a number between 0 and 360. The number of degrees you choose depends on what Type of Rotation you select and what Direction you select.

- 5 Click on OK to rotate your image.

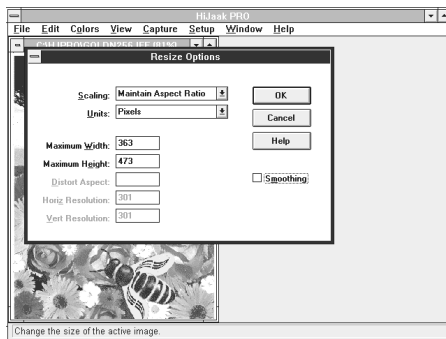


*Step 5: The Rotated Image*

## How to Resize an Image

You can only change the size of your image if it is a raster image. Resizing the image will change both the view and, upon saving, the actual image.

- 1 Pull down the Edit menu and click on Resize. You will see the Resize dialog box



Step 1: Resize Options dialog box

- 2 Type in your sizing options. Each option is described below.
- 3 Click on OK.

**UNITS:** Units are the unit of measure you are specifying when entering a number elsewhere in the dialog box. Pixel units are a measure of the number of dots (pixels) in the raster image. Use Multiple units if you want an output image that contains an even multiple of the number of pixels in the source image. Selecting Multiple will prevent certain image scaling side effects, such as moire patterns.

To specify the unit of measure you want to use, click on either Inches, Centimeters, Pixels, or Multiples in the Units area of the dialog box.

**SCALING:** If you want to specify the dimensions of your destination file, you must select scaling. To specify the type of scaling you wish to use, click on the down arrow to the right of Scaling. Click on one of the following scaling choices.

- ❑ **Maintain Aspect Ratio** — This option is the default. HiJaak PRO reads the height you enter and then calculates the width without distorting the aspect ratio. Or, HiJaak PRO reads the width you enter and calculates the height without distorting aspect ratio.

- Fit in Frame** — Select this if your destination file must fit into a specific height and width (or "frame") without distorting the image. HiJaak PRO reads the height and width you enter in the height and width fields and then makes the file fit inside this frame without distorting the aspect ratio.
- Fit in Width** — Select this if your destination file must fit into a specific width. HiJaak PRO reads the width you enter in the width field and calculates the height for your destination file without distorting the aspect ratio.
- Fit in Height** — Select this if your destination file must fit into a specific height. HiJaak PRO reads the height you enter in the height field and calculates the width for your destination file without distorting the aspect ratio.
- Distort To Frame** — Select this if your destination file must fit into a specific height and width (or "frame") even if the image distorts. HiJaak PRO reads the height and width you enter and then makes the image fit into this frame by distorting the aspect ratio, if necessary.
- Distort Aspect Ratio** — Select this if you wish to distort aspect ratio. Then set the Distort Aspect option.
- Fit in Display** — Select this if you want your image to match the size of your display. For example, if your display is 640x480 and you select this option, your image will become 640x480, regardless of its original size. HiJaak PRO distorts aspect ratio if necessary. Note that you will not be able to view the entire image in the HiJaak PRO Main screen.
- Fit in Display Width** — Select this if you want your image to fit in the width of your display. HiJaak PRO will calculate the height without distorting the aspect ratio. Note that you will not be able to view the entire image in the HiJaak PRO Main screen.
- Fit in HiJaak Window** — Select this if you want the entire image to view in the HiJaak PRO Main screen. Aspect ratio will be maintained.

- Fit in HiJaak Width** — Select this if you want the image to view in the width of the HiJaak PRO Main screen. HiJaak PRO will calculate the height without distorting the aspect ratio.

**SMOOTHING:** Smoothing reduces the jagged appearance of diagonal edges created during scaling of a raster file. To select this option, click on the Smoothing check box.

**MAXIMUM WIDTH:** Before setting this option, set the Units option, then set the Scaling option. Either Height or Width options can become ghosted depending on what you set for scaling.

To specify this option, enter the width you want your image to be. The unit of measure will be the one you specified in the Units area of the dialog box.

**Note:** *MAC Paint files are a fixed size and cannot be changed.*

**MAXIMUM HEIGHT:** Before setting this option, set the Units option, then set the Scaling option. Either Height or Width options can become ghosted depending on what you set for scaling.

To specify this option, enter the height you want your image to be. The unit of measure will be the one you specified in the Units area of the dialog box.

**DISTORT ASPECT:** Before setting Distort Aspect, you must specify Distort Aspect Ratio in the Scaling area of the dialog box.

To specify this option, enter a number in the field. Entering a number greater than 1 will distort the image's aspect ratio by making it wider. Entering a number that is less than 1 will distort by making it taller. For example, entering 2 would make the image twice as wide, whereas entering .5 would make it twice as tall.

**HORIZONTAL RESOLUTION:** Since this option requires you to enter a unit of measure, set the Units option before setting this option. You will only be able to set resolution if the unit of measurement you choose is either inches or centimeters.

To specify this option, enter the horizontal resolution of your destination file. This will be in either Dots Per Inch (DPI) or Dots Per Centimeter (DPCM) depending on the unit you have selected. If the units selected are pixels or multiples, then the resolution field is ghosted.

**VERTICAL RESOLUTION:** Since this option requires you to enter a unit of measure, set the Units option before setting this option. You will only be able to set resolution if the unit of measurement you choose is either inches or centimeters.

To specify this option, enter the vertical resolution of your destination file. This will be in either Dots Per Inch (DPI) or Dots Per Centimeter (DPCM) depending on the unit you have selected. If the units selected are pixels or multiples, then the resolution field is ghosted.

### How to Change Fonts in an Image

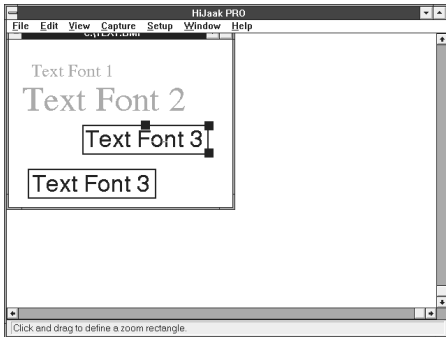
You can only change fonts if your image is a vector image or a DOS text screen capture. To see if your image is in a vector format, see the table of HiJaak PRO-viewable formats at the beginning of [Chapter 2: Getting Started](#), or pull down the File menu and click on Info. If no fonts can be changed in an image, the Change a Font selection is ghosted.

You can change fonts to any TrueType font you have installed. See your Windows manual for instructions on the installation of TrueType fonts.

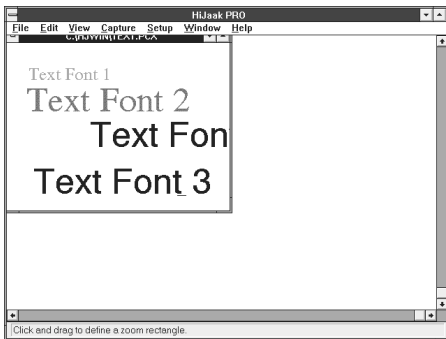
You cannot change any DOS text screen capture fonts to TrueType fonts.

- 1 Make sure that the image you wish to edit is open and active.
- 2 Pull down the Edit menu and click on Change a Font. The cursor changes to a pointing finger and selectable text is framed. If you choose to cancel this function now, press the Esc key. The cursor changes back to the arrow icon.

**Note:** *It is important to understand that letters and numbers may not be described as text in the graphics file, but rather as lines and curves. HiJaak PRO can only select text that is described as text in the graphics file.*



*Step 3: Selecting the Font to Change*



*Step 4: Changing the Size of Selected Font*

3 Move the cursor to a letter that has the font you wish to change and click the mouse to select it. Throughout the image, all text with this font is framed, and the selected text is surrounded by handles.

4 If you want, you can click on and drag the handles to change the width and height of the selected font throughout the text. For example, if you increase the height of the text by 20%, throughout the image, all text in this font will increase in size 20%.

5 To change the font, click once on the selected text. You will see the Font Selection dialog box.

**Note:** If you are editing a DOS text screen capture, you will see a Source Options dialog box instead of the Windows Font Selection dialog box. Click on Help if you need help with this dialog box.

6 Click on any font in the Windows Font Selection dialog box.

**Warning:** Before clicking on OK to accept your changes, consider that after you save, every time you convert to or from the format of the image you are editing, the font changes you have just made will be done automatically. This is because of HiJaak PRO's sticky editing feature. For example, if you increased a font size by 30% in a CGM image, this change would be made automatically the next time you Open, Convert, or Save As in the CGM format. To avoid this, save settings in a set file and click on the Defaults button in the Load Settings dialog box. To learn how to save set files, see [Loading and Saving Set Files in Chapter 7: Changing Your Setup](#).

7 To save your font changes, click on OK.

### How to “Undo” the Last Editing Operation You Performed

- 1 Pull down the Edit menu. Click on Undo to reverse the effect of the most recent editing operation.
- 2 If available, use repeatedly to erase the editing operations you have performed in reverse order. If this type of reverse-editing is not available, the Undo command will change to Redo.

**Note:** *To Undo all the viewing and editing changes you have made in an editing session, pull down the Edit menu and click on Undo All. Your image will view as it did when you first opened it. The Undo All option is only available to vector files.*

---

## Working with Colors

HiJaak PRO allows you to manipulate colors in an image. Like editing, manipulating colors will change both the view and the file. Also like editing, most color operations may be undone with the Edit menu’s Undo command.

HiJaak PRO allows you to manipulate colors in the following ways:

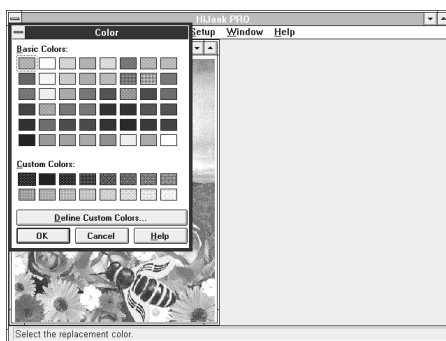
- Change a Color** — allows you to change any color in an image.
- List Color Changes** — allows you to verify and edit any color changes you have made.
- Contrast and Brightness** — allows you to manipulate light and dark areas of the image.
- Reduce Colors** — allows you to increase or decrease the number of colors in the image.
- Grayscale** — forces all colors in the image to shades of gray.
- All Colors to Black** — forces all colors in the image to black.
- Reverse Black and White** — replaces all black in an image with white, and all white with black.



- ❑ **Invert Colors** — inverts all colors in an image, creating a "negative."
- ❑ **Reveal Background Color Objects** — inverts the color of objects that are the same color as the background, and thereby reveals them.

### How to Change Specific Colors in an Image

1 Make sure that the image you wish to edit is open and active.

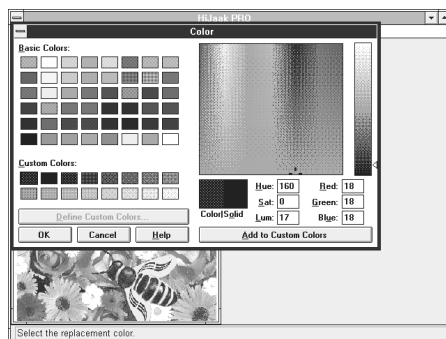


Step 3: Color Dialog Box

2 Pull down the Colors menu and click on Change a Color. The cursor changes to the eye dropper icon. If you choose to cancel this function now, press the Esc key. The cursor changes back to the arrow icon.

3 Move the cursor to the color you wish to change and click the mouse to select. You will see the Color dialog box.

4 [OPTIONAL] If you want to define a custom color, click on the Define Custom Colors button. The dialog box will expand and you will see a color refiner box and a luminosity bar. Drag the cursor in the color refiner box and on the arrow beside the luminosity bar to define your color.



Step 4: Define Custom Colors

You can also change colors by typing values into the Red, Green and Blue boxes, or the Hue, Sat (saturation), and Lum (luminosity) boxes.

The color you create is shown in the left side of the Color/Solid box. Double-click on the right side of the box to use the solid color closest to the one you have created.

Click on Add to Custom Colors. You will see the color you created in the Custom Color Palette.

- 5 Click on the replacement color.
- 6 Click on OK. Every place the selected color appears in the image, it will be replaced with the replacement color.

**Note:** *If the image in which you are trying to change a color has more colors than your display, you will not be able to see all the actual colors in the image. Therefore, what appears as a solid white, may actually represent a dithered pattern of several shades of white. Keep this in mind if the Change a Color item does not change colors in your image everywhere you expect it to.*

### How to Verify and Edit Your Color Changes

You can see, modify, or delete the color changes you have made. To do this, pull down the Colors menu and click on List Color Changes. You will see a list of the color changes that have been made to the currently active image. This includes "sticky" changes. If you want, you can modify the changes by clicking on Modify, or start over by clicking on Clear.

To apply all the color changes to the active image, click on the Apply Color Changes check box.

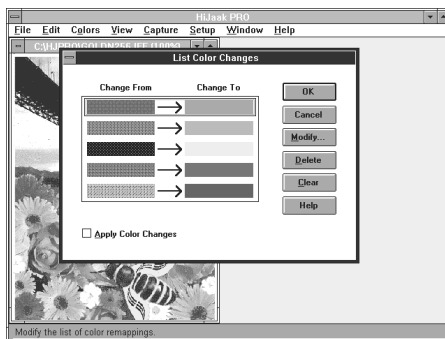


Figure 1: List Color Changes

## How to Adjust Brightness and Contrast

HiJaak PRO allows you to increase or decrease the differences among light and dark colors in an image. Contrast and Brightness and related options are similar to those that would be available to someone developing photographs in a darkroom. To adjust lights and darks in your image, pull down the Colors menu and click on Contrast and Brightness. You will see the Contrast and Brightness dialog box. The following options are available:

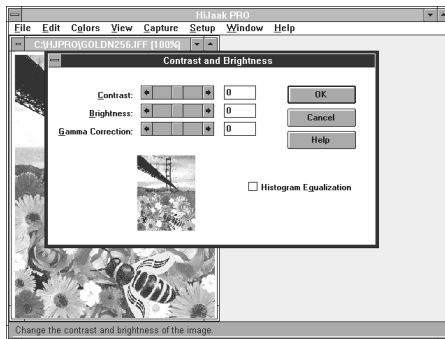


Figure 2: Contrast and Brightness Dialog Box

- Contrast
- Brightness
- Gamma Correction
- Histogram Equalization

You will see the thumbnail representation of your image change dynamically as you change the values of these options. Each option is described in detail below.

**CONTRAST:** Increase the Contrast to make light colors lighter and dark colors darker. Decrease the Contrast to make light colors darker and dark colors lighter.

To set Contrast, click on the scroll bar next to Contrast, or type a value into the Contrast field.

**BRIGHTNESS:** Modify this option if you want to either lighten or darken your image.

To set Brightness, click on the scroll bar next to Brightness, or type a value into the Brightness field.

**GAMMA CORRECTION:** Increase Gamma Correction to increase brightness in the midrange areas, while leaving the dark and light areas alone. Decrease Gamma Correction to decrease brightness in the midrange areas, while leaving the dark and light areas alone.

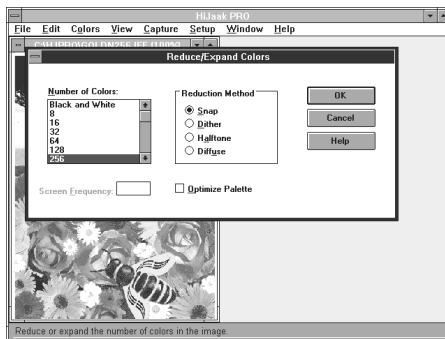
To set Gamma Correction, click on the scroll bar next to Gamma Correction, or type a value into the Gamma Correction field.

**HISTOGRAM EQUALIZATION:** Select this option if you want to bring out detail in an image that appears to be basically the same color, or colors, throughout the image. To bring out detail, histogram equalization analyzes the colors in the image. Colors that are very close in value (i.e. they look very similar) are distributed over the spectrum of colors in the image.

To select Histogram Equalization, click on the Histogram Equalization check box. When you select Histogram Equalization, the Contrast, Brightness and Gamma Correction options are disabled.

### How to Reduce or Increase the Number of Colors

Use this option to specify how colors will appear in your image. To change the number of colors in an image, pull down the Colors menu and click on Reduce Colors. You will see the Reduce/Expand Colors dialog box. The following options are available:



- Number of Colors
- Reduction Method
- Screen Frequency
- Optimize Palette

Figure 3: Reduce Colors Dialog Box

Each option is described in detail below.

**NUMBER OF COLORS:** This option allows you to select how many colors will appear in the image. Use this option if you are converting an image with many colors to one with fewer colors, or vice versa. If the number of colors is reduced, a reduction method should be specified.

If you are converting a file, the number of selections available will depend on the type of destination file you have selected.

To specify this option, click on the desired number in the Number of Colors area of the dialog box.

**REDUCTION METHOD:** Use this option to specify which color reduction method HiJaak PRO should use to create the file. You have a choice of Snap, Halftone, Dither, or Diffuse. These are described below.

- ❑ **SNAP** — This is the quickest method. Essentially, HiJaak PRO reads each pixel in the source file and matches the color as closely as possible using the destination format's palette. This works well if your source image has a wide range of colors, and the adjacent dots are well differentiated. You will probably not want to use this if you are converting a file with many colors to a file with few colors.
- ❑ **HALFTONE**— This method, as well as Dither and Diffuse, is often used when converting a color file for output on a black and white device (like a black and white laser printer). Halftone, Dither, and Diffuse all attempt to simulate colors with patterns representing different levels of gray. Halftone simulates gray by varying the placement and grouping of each dot (pixel) on an invisible grid. The more dots in a certain area on the grid, the darker the shade. You can see this variation under a magnifying glass. In Halftone the groupings are dots, in Dithering the groupings are a more intermixed pattern. The Halftone method generally produces the best black and white printed image.
- ❑ **DITHER** — This method creates patterns for each color or shade of gray. These patterns are repeated in the image each time that particular color or shade of gray is needed. Sometimes these patterns are visible and they can become distracting. If this happens, you may want to try Diffuse.
- ❑ **DIFFUSE** — This method is similar to the Dither method except that the patterns change (or diffuse) gradually across the image. Generally, Diffuse will produce the best displayed image. This means that you are less likely to notice a repeating pattern. The downside of this method is that “worming” patterns can appear in a local area.

**OPTIMIZE PALETTE:** Select this option if you are reducing the number of colors in an image, and you want HiJaak PRO to select colors for the destination image closest to those in your original image. For example, if your source image was a close-up of a red rose, HiJaak PRO would select a palette with a variety of reds for the image.

To select this option, click on the Optimize Palette check box.

**Hint:** *If you have an all-gray image, you probably should not use Optimize Palette.*

**SCREEN FREQUENCY:** You may only modify the Screen Frequency option if you have selected Halftone as your color reduction method. Screen Frequency is measured in Lines per Inch (LPI). Resolution (horizontal and vertical) and screen frequency are related to the number of grays produced in your output. The formula for this is as follows:

$$\text{GRAY LEVELS} = (\text{RESOLUTION} / \text{SCREEN FREQUENCY})^2$$

For example, if you have a 300 Dot Per Inch (DPI) resolution printer, and you set your screen frequency to 150 LPI, your printer output will have 4 grays. If you change your screen frequency to 75 LPI, your printer output will contain 16 grays but will produce a coarser grain than the first example. If you want more grays with a fine grain, increase the resolution by printing out to an imagesetter with high resolution (1200 DPI or higher).

When you select Halftone as the color reduction method, Screen Frequency controls the size of the half-tone screen. A coarser screen will show more gray tones but less edge crispness.

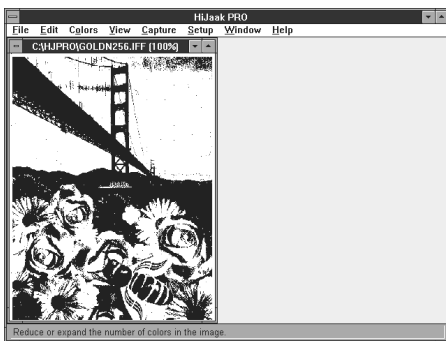
If you do not set screen frequency, then HiJaak PRO automatically detects a screen frequency for your image. This auto-detect feature usually yields the best results. If you do set Screen Frequency, then you should set Horizontal and Vertical resolution of your file to match your output device.

## How to Make the Image Gray

To force the image to a grayscale with the same number of grays as colors were in the image, pull down the Colors menu and click on Grayscale. A check appears next to that menu item, and your image immediately becomes a grayscale.

## How to Make the Image Black and White (Monochrome)

- 1 Pull down the Colors menu and click on Reduce Colors. You will see the Reduce/Expand Colors dialog box.



Step 4: The Black and White Image

- 2 In the Number of Colors area, click on Black and White (2).
- 3 If you have a high contrast image, such as a text screen capture, click on the Snap radio button in the Reduction Method area. If you have an image with many colors and you want simulated grays, select Dither in the Reduction Method area.
- 4 Click on OK. The image becomes solid black and solid white.

**Note:** This effect, creating an image with solid colors of the number you specify, is also known as posterization. You can posterize any image by reducing the number of colors, for example, from 256 to 16, and selecting Snap in the Reduction Method area.

## How to Force all Colors to Black

The All Colors to Black option is useful if you have an image with very light foreground colors and a white background, and you want to print it. In this case, this option forces all colors to black and leaves white areas alone, which yields good results when printing. All Colors to Black is most commonly used for printing CAD drawings on black and white printers, because it forces lines to appear as solid black rather than as dithered gray.

This option is also useful if you have a 2-color DOS text screen capture in which the colors are similar. In this case, All Colors to Black analyzes the image and forces the lighter color to white, and the darker color to black.

To force all colors in an image to black, pull down the Colors menu and click on All Colors to Black.

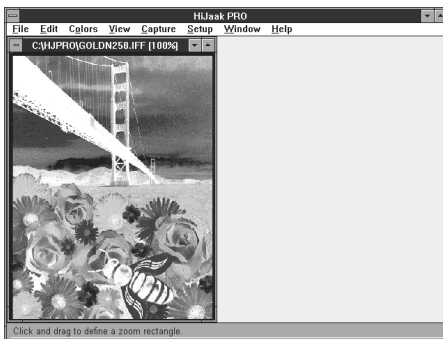
### How to Reverse Black and White in an Image

- 1 Make sure the image you want to process is open and active.
- 2 Pull down the Colors menu and click on Reverse Black and White. All black in the image becomes white, and all white becomes black.

### How to Invert Colors in an Image

Select this option if you want to create a "negative" of the original image.

- 1 Make sure the image you want to process is open and active.
- 2 Pull down the Colors menu and click on Invert. All colors in the active image will be inverted.



*Step 2: The Inverted Image*

### How to Reveal Hidden Objects

When a vector image contains objects – lines, circles, etc. – that are the same color as the background, those objects become hidden. In order to reveal these hidden objects, with the image open and active, pull down the Colors menu and click on Reveal Background Color Objects. HiJaak PRO inverts the color of the hidden objects and thereby reveals them.



# Converting an Image from One Format to Another

**H**iJaak PRO allows you to convert to and from any of over 70 formats. If you have a file that you wish to bring into one of a number of popular software applications, you may want to let HiJaak PRO select the destination format that will successfully import into your application. When using the Convert To or the Save As methods of conversion (described later in this chapter), click on the Applications button in either the Save As or Convert To dialog boxes. Destination file options are also available from these dialog boxes. These processing options are explained at the end of this chapter.

---

## Introduction to Vector and Raster File Formats

**T**here are two general types of graphics file formats: vector and raster. Vector images consist of drawing objects, such as lines, circles, and squares. Vector images can also contain text with font information that, unlike raster text, can be changed using HiJaak PRO's Change a Font feature. Vector images are usually created by CAD, drawing, charting, or graphing software applications.

Raster images consist of thousands of dots, called pixels, that are arranged in a rectangle called a bitmap. Raster images are usually created by scanners or paint software applications. All fax formats are raster.

Metafiles are a third graphics file format type, containing both raster and vector components. In the following conversion rule, HiJaak PRO treats metafiles like vector files.

Using HiJaak PRO you *can* convert from and to the following:

- a VECTOR file format to a VECTOR file format
- a VECTOR file format to a RASTER file format
- a RASTER file format to a RASTER file format

You *cannot* convert from and to the following:

- ❑ a RASTER file format to a VECTOR file format.

For best results, convert metafile formats to raster formats. If you attempt to convert a metafile to a vector format, you may succeed in converting only a portion of the original image or none of the image at all. This is because metafiles may contain both raster and vector components, and HiJaak PRO cannot convert raster information to a vector format.

Before converting a file, check the following lists of HiJaak PRO-supported RASTER and VECTOR formats to make sure you are not trying to convert from a RASTER to a VECTOR format.

Table of Supported Formats

VECTOR		RASTER		FAX (Raster)	
AI	Encapsulated PostScript (dest. only)	ATT	AT&T Group 4	F01	AdTech
CGM	Computer Graphics Metafile	BMP	Windows/ OS/2Bitmap	301	Brooktrout Fax-Mail
DRW	Micrografx Draw	CAL	CALS Raster	001	Calculus EZ-Fax
DXF	AutoCAD	CPR	Knowledge Access (source only)	001	Complete FAX Portable
EPS	Encapsulated PostScript (dest. only)	CUT	Dr. Halo	001	Complete FAX
GCA	IBM GOCA	DBX	DataBeam	FAX	Everex EFAX 2
GEM	GEM Metafile	DIB	Windows/ OS/2 Bitmap	FAX	Everex EFAX 3
IGF	Inset Systems IGF	ED5	EDMICS	FAX	Frecom FAX96
MCS	MathCAD (dest. only)	EPS	Encapsulated PostScript (dest. only)	FAX	Fujitsu dexNET
MET	PM Metafile (dest. only)	GED	Wicat	TIF	GammaLink
PCT1	Macintosh PICT (source only)	GIF	CompuServe	FAX	Generic Fax
PCT2	Macintosh PICT	ICA	IBM IOCA	001	Hayes JT Fax
PIC	Lotus	ICO	Windows Icon	FFF	JetFax
PIX	Inset Systems PIX	IFF	Amiga ILBM	DCX	Intel
PGL	HP 7475A Plotter	IGF	Inset Systems IGF	OAZ	Net Fax Manager
P10	Tektronix Plot 10 (source only)	IMG	GEM Paint	F01	Product R&D Fax Modem
TXT	ASCII Text	JPG	JPEG	FAX	Relisys TEFAX
WMF	Windows Metafile	KFX	Kofax Group 4	001	Ricoh
WPG	WordPerfect Graphic	MAC	MacPaint	SCI	SciFAX
		MSP	Microsoft Paint	001	SMARTFAX
		PCD	Photo CD	DCX	SpectraFAX
		PCL4	HP LaserJet II	F01	TriGem
		PCX	PC Paintbrush	001	WorldPort
		PCT1	Macintosh PICT (source only)	FAX	Xerox MicroFax
		PCT2	Macintosh PICT		
		PIX	Inset Systems PIX		
		RAS	Sun Raster		
		SBP	IBM Storyboard PIC (source only)		
		TGA	Truevision		
		TIF	TIFF		
		WPG	WordPerfect Graphic		

Converting Images

---

## The Three File Conversion Methods

**H**iJaak PRO allows you to convert a file using three methods: the Open then Save As method, the Convert method, and the Command Line method. A description of each is given below. Choose the method that suits your needs. Step-by-step instructions are given later in this chapter.

### When to Use the Open then Save As Method

Use this method if you want to view the image as it is before you convert it. Certain interactive editing options, such as cropping, font changes, and color changes are accessible through this method.

### When to Use the Convert Method

Use this method if you want the option of converting either the file you are currently viewing, or any other file on the disk. If you choose to convert the file you are viewing, the procedure will follow the Open then Save As method. Converting a file on disk without first opening it is the faster method.

### When to Use the Command Line Batch Method

Use this convert method if speed is of primary importance. It allows you to quickly convert a file from Windows without bringing up the HiJaak PRO Main screen. It also allows you to use DOS wild cards to convert in batches.

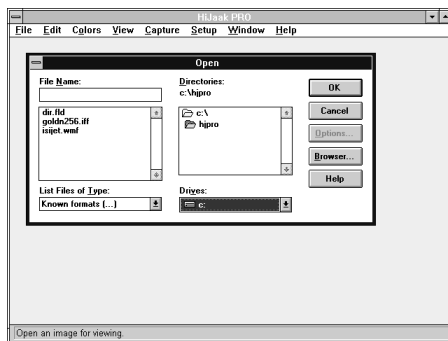
Do not use this method if you need to view the image you want to convert, or if you need to edit the file. To change default options, you must attach a pre-existing set file. For more information on set files, see [Chapter 7: Changing Your Setup](#).

## Open then Save As Method

### How to Open the File You Wish to Convert

*Note: In this manual, the source file is the file you wish to convert. The destination file is the file you will create when you convert the file.*

1 Pull down the File menu. Click on Open. You will see the Open dialog box.

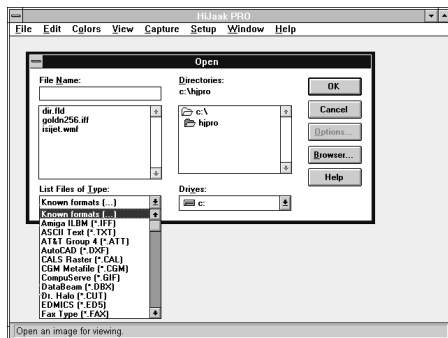


Step 1: Open Dialog Box

2 In the Drives area of the dialog box, click on the drive that contains your source file.

3 In the Directories area of the dialog box, click on the subdirectory that contains your source file.

4 In the List Files of Type area of the screen, pull down and select the type of file you wish to open. If the type of file you have selected has source image processing options available, the Options button will become bolded.



Step 4: Pull Down List Files of Type

- 5 [OPTIONAL] If source options are available and you wish to set options, click on the Options button. You will see the Source Options dialog box.

Auto Scale options are available to all formats. These options were described in Chapter 3: Changing the Look of an Image.

Other source options available to you will depend on the type of file you are opening. If you have any questions about specific options on your screen, click on Help. You will see a list of options. Click on a particular item for more information.

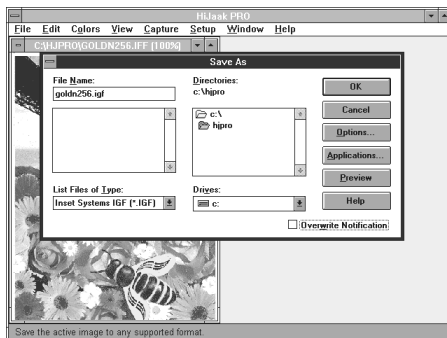
- 6 If you set options, click on OK to return to the Open dialog box. In the File Name area of the screen, click on the file you wish to open. Click on OK. In a few moments the source image will appear on the screen.

*Note: HiJaak PRO allows you to open multiple images for conversion. In the Open dialog box, hold down the Ctrl key while you click on the files in the File Name area that you wish to convert. The images will convert in the order in which they appear in the list box.*

*Hint: If the source image looks bad, your source file may be bad*

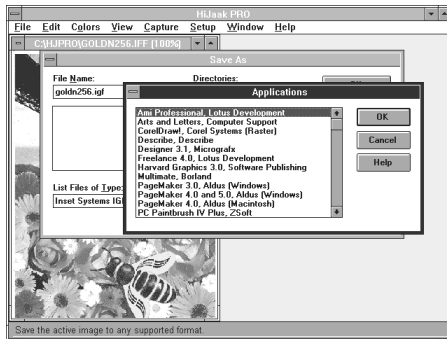
If you want, you can edit or process the image before saving it to the same format or to another format. To learn more about editing and image processing, see Chapter 3: Changing the Look of an Image.

### How to Save the File in Another Format



*Step 1: Save As Dialog Box*

- 1 You have opened and are viewing a file. Pull down the File menu and click on Save As.... You will see the Save As dialog box.
- 2 Click on the drive and directory where you want HiJaak PRO to store your converted file.



*Step 3: Application Dialog Box*

**3** [OPTIONAL] If you want, you can have HiJaak PRO pick a destination file type that usually works well with the software application you are using (PageMaker, Word for Windows, etc.). To allow HiJaak PRO to select for you, click on the Applications button then click on the application you will be using. Click on OK.

**4** If you do not do step 3, you will have to select your own destination file type. Click on List Files of Type and click on the file type to which you want to convert.

**5** [OPTIONAL] If you want to set destination file options, click on the Options button. Destination processing options are described later in this chapter.

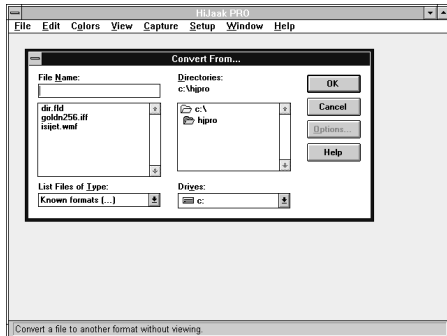
**6** [OPTIONAL] If you want to preview what the converted file will look like, make sure you have specified everything else in the dialog box, including Applications and Options, and then click on Preview. HiJaak PRO will take a few moments then show the converted image on the screen. When you finish previewing, select Done! from the HiJaak PRO Main menu. If you like the results, and would like to save the file, click on OK. If you would like to change the results, repeat steps 5 and 6.

**7** If you do not do step 6, click on OK to start the conversion process.

## Convert Method

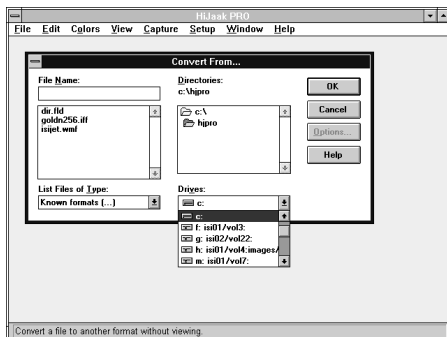
### How to Convert a File on Disk

- 1 Close all open images. Pull down the File menu. Click on Convert. You will see the Convert From dialog box.



Step 1: Convert From Dialog Box

- 2 In the Drives area of the dialog box, click on the drive that contains your source file.
- 3 In the Directories area of the dialog box, click on the subdirectory that contains your source file.
- 4 In the List Files of Type area of the screen, pull down the list and select the type of file you want to convert. If the type of file you have selected has source image processing options available, the Options button will become bold and available.

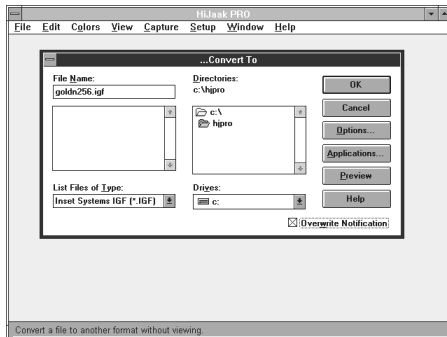


Step 2: Select the Source Drive

- 5 [OPTIONAL] If you want to set options, click on the Options button. If you want to learn more about the source options available for your particular format, click on the Help button.

*Important: HiJaak PRO has “sticky” editing features. This means if you change the color or the font in a file of a particular format and then save it, when you open other files of that format or convert to that format, those changes will “stick” - or be done automatically. If you do not want the changes to affect subsequent editing or conversion sessions, you should use a special custom-made set file. For more information on set files, see [Loading and Saving Set Files in Chapter 7: Changing Your Setup](#).*





Step 6: Convert To Dialog Box

6 If you set options, click on OK to return to the Convert From dialog box. In the File Name area of the screen, click on the file you want to convert. Click on OK. You will see the Convert To dialog box.

7 Click on the drive and directory where you want HiJaak PRO to store your converted file.

8 [OPTIONAL] If you want, you can have HiJaak PRO select a destination file type that works well with the software application you are using (e.g. PageMaker, Ventura Publisher, etc.). To allow HiJaak PRO to select for you, click on the Applications button and click on the application you will be using. Click on OK.

9 If you do not do step 8, you will have to select your own destination file type. Click on List Files of Type and click on the file type to which you want to convert.

10 [OPTIONAL] If you want to set destination file options, click on the Options button. Destination processing options are described later in this chapter. See the [Note](#) on the previous page for information on the "stickiness" of options.

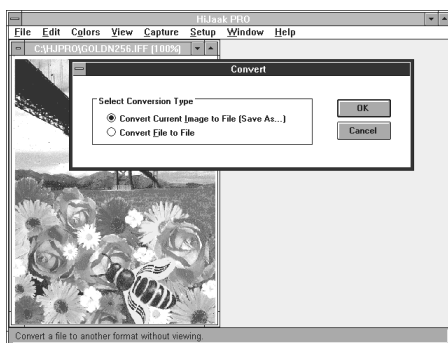
11 [OPTIONAL] If you want to preview what the converted file will look like, make sure you have specified everything else in the dialog box, then click on Preview. HiJaak PRO will take a few moments then show the converted image on the screen. If you like the results, and would like to save the file, click on OK. If you would like to change the image, change the options by repeating step 10.

12 If you do not do step 11, click on OK to start the conversion process.

*Tip: To perform several conversions, press the Ctrl key and click on the files you want to convert in the File Name area of the Convert From dialog box. Click on OK. In the Convert To dialog box, select the File Type to which you want to convert the files. You are not allowed to select a File Name; instead, each file retains its original name. Each converted file's extension will be that of the file type you selected.*

## How to Convert the File You are Currently Viewing

- 1 You have opened and are viewing the file you want to convert. Pull down the File menu and click on Convert. You will see the Convert dialog box.



- 2 Click on the Convert Current Image to File (Save As) radio button and click on OK. You will see the Save As dialog box. In the File Name area of this dialog box, you will see the name of the file you are viewing.

*Step 1: The Convert Dialog Box*

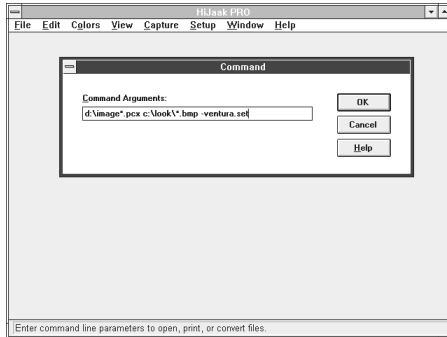
*Note: If you select the Convert File to File radio button and click on OK in step 2, you will see the Convert From dialog box. Here, you will be allowed to select any file on disk to convert. See How to Convert a File on Disk earlier in this chapter for further instructions.*

- 3 The remainder of this procedure is identical to the Save As method. Follow steps 2-7 of How to Save the File in Another Format to complete the conversion.

## Command Line Method

### How to Convert Files from the Command Line

- 1 Click on either the Run command in the Windows Program Manager File menu or the Command selection on the HiJaak PRO File menu.



*Step 1: Command Line Convert*

- 2 If you are using the Program Manager, type HJPRO [source filename] [destination filename]; if you are using the HiJaak PRO Command dialog, the leading HJPRO is optional. All wildcards that you can use in DOS, you can use in command line mode. The complete syntax for the command line is this:

```
HJPRO [path/source.ext]
[path/destination.ext] [-setfile.set]
```

For example, if the PCX files you want to convert all begin with IMAGE and are on the D drive, and you want to convert them to BMP files on the C drive in the LOOK subdirectory, and you want to load the Ventura Publisher set file, then type:

```
HJPRO d:\image*.pcx c:\look*.bmp
-ventura.set
```

**Note:** For information on what a set file is and how to use one, see [Loading and Saving Set Files in Chapter 7: Changing Your Setup](#).

**Note:** Some Windows applications allow you to type a command line without exiting the application. If you are interested in running HiJaak PRO from your application, check your application's manual.

---

## Destination Processing Options

**P**rocessing Options affect the appearance of your destination file. To select destination processing options, click on the Options button in the Save As or the Convert To dialog box. Some options are available to all formats, some only to raster formats, and some only to vector formats. Other options may be format specific. You learned about raster and vector formats earlier in this chapter. For more information on format specific options, click on the Help button in the Processing Options dialog box.

### Processing Options

These processing options are available to all formats. They are explained in detail in Chapter 3: Changing the Look of an Image.

- List Color Changes
- Reduce Colors
- Rotate
- Units
- Maximum Width
- Maximum Height
- Distort Aspect
- Contrast/Brightness

*Note: If you are using the Convert File to File method and you select the Contrast/Brightness option, you will see an Intensity Curve. The Intensity Curve is a graph that displays how the levels of intensity of colors in the source file will be represented in the image. The curve will change to show the results of your Contrast, Brightness and Gamma Correction settings. If these three settings are set to zero, the intensity curve will be a straight diagonal line. If Contrast is increased, the slope of the intensity curve increases. If Brightness is changed the curve shifts up or down, indicating that the colors become lighter or darker respectively. If Gamma Correction is changed, the curve bows up or down, indicating that the medium intensity colors become lighter or darker respectively.*

## Raster Processing Options

These processing options are only available to raster formats. They are explained in detail in Chapter 3: Changing the Look of an Image.

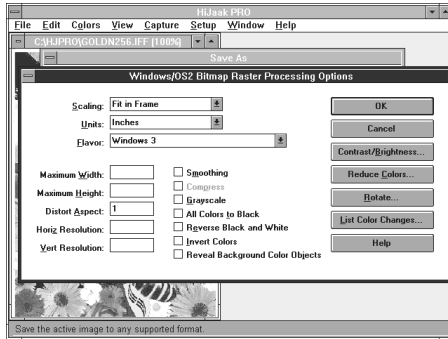


Figure 1: Raster Processing Options

- Scaling
- Horizontal Resolution
- Vertical Resolution
- Smoothing

## Vector Processing Options

These processing options are only available to vector formats.

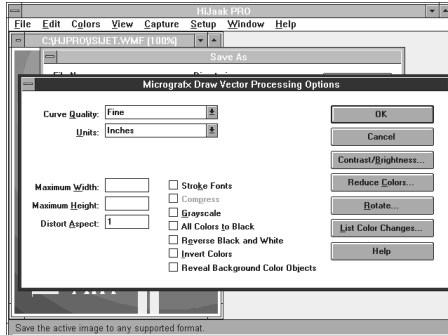


Figure 2: Vector Processing Options

- Curve Quality — This option determines how smooth the lines in the destination file will be. The three selections are Fine, Medium, and Coarse. The finer the line, the longer the processing time during conversion, and the larger the resulting file, but the better the quality.

To select Curve Quality, click on Fine, Medium, or Coarse in the Curve Quality pull-down list.

- Stroke Fonts — This option allows you to have any text in a vector file drawn or "stroked out" using Windows text outlines. Use this option if you want the text in the destination file to appear as it does on the HiJaak PRO Main screen, even if your destination file format does not support the screen font used.

To select Stroke Fonts, click on the Stroke Fonts check box.



# Capturing a Windows Screen

The following describes how to capture a Windows screen. If you want to learn how to capture the screen of an application running under DOS, see [Chapter 6: Capturing a DOS Screen or Printer Output](#).

**Note:** *You are using a DOS screen if you do not start Windows or if you start a DOS shell from the Windows "DOS Prompt" icon. Be aware that some programs that can be started from Windows icons are actually using DOS screens — they have a certain DOS "look" about them. If in doubt, consult the section in your Windows manual that describes the Windows PIF editor. If a program is started through a PIF file with the window attribute set to "full screen," then the program is using a DOS screen.*

---

## Starting Windows Screen Capture

HiJaak PRO allows you to start a Windows screen capture by using the hotkeys, the HiJaak PRO icon, or the Capture menu. Which method you choose depends on the kind of screen captures you will be doing.

### When to Use Hotkey Startup

Use this method if you need to capture a submenu in an application or if you need flexibility in capturing your screens. The hotkey method allows you to move around freely in Windows and easily choose the full screen, area, or window you want to capture.

To use this method, you must remember the hotkey combination.

### When to Use Icon Startup

Use this method any time the HiJaak PRO icon is on the screen.

Note that if your application is taking up the full screen, you will not be able to select this method. When you use this method, your application will not be active; HiJaak PRO will. Since your application is not active, you cannot capture its pull down menus.

## When to Use Capture Menu Startup

Use this method if you need to see the image as it is being captured to the HiJaak PRO screen. You can then convert or edit the captured image. This method can be used as a learning tool from the Main menu, as it provides on-line instructions for performing a Windows capture.

Note that when you use this method, your application will not be active; HiJaak PRO will. Since your application is not active, you cannot capture its pull down menus.

---

### Important Screen Capture Hints

The following hints will help you improve the quality of your screen capture images and help you work more efficiently.

**HINT 1:** If you are capturing a screen that you will eventually be printing to a black and white device (like a laser printer or an imagesetter), select a monochrome palette for the Windows screen before capturing. To do this, select Colors from the Windows Control Panel and specify Monochrome. Also, if your black and white printer or imagesetter supports PostScript language, use HiJaak PRO to convert the captured screen to the PostScript language format (EPS). In the Destination Options box, select Snap. Your PostScript printer will handle halftoning.

**HINT 2:** To get the best quality Windows Screen fonts in your screen captures, use the highest resolution screen mode for your graphics card and use the highest resolution screen fonts. Try to match the resolution of your output device.

**HINT 3:** By default, each time you capture a Windows screen, the Windows Capture Options dialog box will pop up. If you will be capturing a lot of screens with the same Windows Capture Option settings, you may want to set HiJaak PRO so the dialog box does not pop up each time you capture. To do this, pull down the Capture menu and click on Windows Capture Options. Click on the Prompt for Capture Options check box in the Windows Capture dialog box. This will de-select the prompt. If you later want to change options, you will have to pull down the Capture menu, and select Windows Capture Options.

**HINT 4:** To capture your application's pull-down menus, click on the Prompt for Options check box in the Windows Capture Options dialog box to de-select it, and use the hotkeys to capture your screen.



**HINT 5:** To include the cursor in your screen shot, click on the Show Cursor check box in the Windows Capture Options dialog box. Make sure that the Prompt for Options check box is selected, and select Screen in the Capture field.

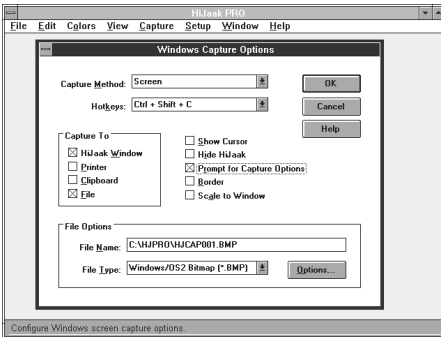
**HINT 6:** If your application only covers a portion of the screen, and you want to capture the entire screen, the HiJaak PRO icon or Main screen may be captured along with your application. To prevent this, click on the Hide HiJaak check box in the Windows Capture Options dialog box.

**HINT 7:** If you want to place a thin black border around your captured image, click on the Border check box in the Windows Capture Options dialog box.

**HINT 8:** If you want the captured image to fit in the HiJaak PRO Main screen, click on the Scale to Window check box. This option will change only the displayed capture, not the actual file.

## How to Capture Screens Using the Hotkeys

- 1 From the HiJaak PRO Main screen, pull down the Capture menu and select Windows Capture Options. You will see the Windows Capture Options dialog box.



Step 1: Windows Capture Options Dialog Box



Step 5: Selecting the File Type

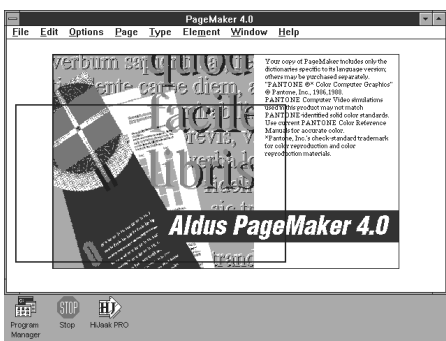
- 2 In the Capture field, click on the type of object you want to capture:
  - SCREEN** — The entire screen
  - WINDOW/OBJECT** — A specific window, icon, or pull down menu on the screen
  - AREA** — An area of the screen
- 3 If you want the cursor to appear in the image, click on the Show Cursor check box.
- 4 Click on the destination check box in the Capture To box. To have the captured image saved as a file, select File. To enter a destination filename in step 6, you must click on File as a destination.
- 5 If you clicked on Capture to File in step 4, click on the scroll button on the right of the File Type field. Scroll to the file format in which you want to save your captured image. For example, select Inset Systems (\*.IGF).
- 6 If you clicked on Capture to File in step 4, click on the File Name field. Type the path and filename of the file you wish to capture. If, for example, you decided to capture the screen into Inset System's IGF format, and you would like the captured file to be on the c: drive, you would type:

**c:\example.igf**

- 7 [OPTIONAL] If you selected Capture to File in step 4, you can click on the Options button to select destination processing options. See [Chapter 3: Changing the Look of an Image](#) for information on using these options.

8 Note the key combination in the Hotkey field. These are the keys that you will use to capture the screen image. The default keys are Ctrl + Shift + C. Click on OK to accept the options you have selected. HiJaak PRO will use these options each time you capture a screen until you return to this dialog box and change the options.

9 Click on the down arrow in the upper right hand corner of the screen to minimize HiJaak PRO. Move to the screen that contains the image you want to capture.



10 Press the hotkey combination you noted in step 8. The dialog box pops up allowing you to make any changes to your options before taking the picture. If you do not change the filename when taking several pictures, the program will automatically increment a numeral in the filename you specified in the first capture. For example, if you entered `c:\screens\example1.igf` as the first file, HiJaak PRO will make the next capture `c:\screens\example2.igf`.

Step 11: Capturing an Area

11 Click on OK. The dialog box will close. How you capture depends on whether you selected Screen, Window/Object, or Area in [step 2](#).

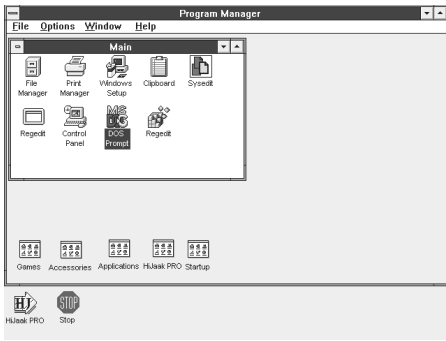
**CAPTURING A SCREEN:** When you click on OK, you will hear a beep. This indicates that HiJaak PRO has captured the screen.

**CAPTURING A WINDOW/OBJECT:** After you click on OK, move the mouse cursor around the screen. Notice that as the mouse passes over an object, the object becomes emphasized. When the window or object you wish to capture is emphasized, click the left mouse button once. You will hear a beep signaling that HiJaak PRO has captured the window or object.

**CAPTURING AN AREA:** After you click on OK, click and drag the mouse to define the area you want to capture. You will see a rectangle. Release the mouse button. You will hear a beep. This indicates that HiJaak PRO has captured the area.

## How to Capture Screens Using the HiJaak PRO Icon

- 1 Run HiJaak PRO. Click on the down arrow in the upper right hand corner of the screen to minimize HiJaak PRO.



Step 2: Re-size Image to Make Icon Visible

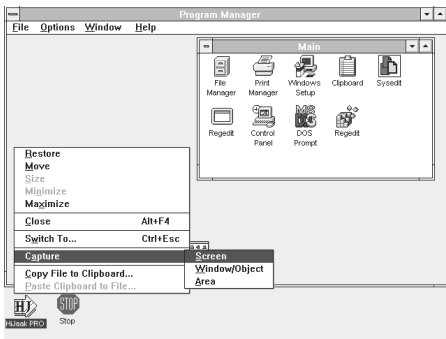
- 2 Run your application and compose the image you want to capture. Click on the up and down arrow in the upper right hand corner of the screen. Click and pull on the edge of the window to re-size the image so the HiJaak PRO icon is visible.

- 3 Click once on the HiJaak PRO icon. You will see the HiJaak PRO System menu.

- 4 Click on Capture. You will see a side menu. Click on the type of object you want to capture:

- SCREEN** — The entire screen
- WINDOW/OBJECT** — A specific window, icon, or pull down menu on the screen
- AREA** — An area of the screen

You will see the Windows Capture Options dialog box. Fill in this dialog box as described in steps 2 through 7 of the [How to Capture Screens Using the Hotkeys](#) procedure earlier in this chapter.

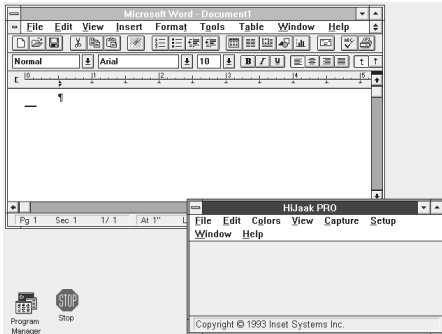


Step 3: HiJaak Pro System Menu

- 5 Click on OK and capture the image as described in step 11 of [How to Capture Screens Using the Hotkeys](#).

## How to Capture Screens Using the Capture Pull Down Menu

- 1 Open the application you want to capture.
- 2 If your application is maximized, click once on the up and down arrows in the upper right hand corner of the screen.



Step 3: Application and HiJaak Pro Sharing the Screen

- 3 If the Program Manager is not open already, double click on the Program Manager icon to open it, then double click on the HiJaak PRO program group to open it. Double click on the HiJaak PRO icon to open it without closing your application. Re-size the HiJaak PRO window so that it is only taking up part of the screen. You should now have both your application window and the HiJaak PRO window on the screen.

- 4 In HiJaak PRO, pull down the Capture menu. Click on the type of object you want to capture:
  - AREA** — An area of the screen
  - SCREEN** — The entire screen
  - WINDOW/OBJECT** — A specific window, icon, or pull down menu on the screen

HiJaak PRO will become minimized.

- 5 You will see a message dialog box stating, "Press the *Ctrl-Shift-C* hotkeys to capture the desired *Area*. Hint: You may perform a capture with the hotkeys at any time when HiJaak is running." If you have selected hotkeys other than the default to capture your screens, your selected hotkeys will appear rather than *Ctrl-Shift-C*. If you selected Screen or Window/Object from the menu, the selected item will appear in the message rather than *Area*. Click on OK.

- 6 Capture the image as described in step 11 of [How to Capture Screens Using Hotkeys](#).
- 7 If you have not changed the default Prompt for Options setting, you will see the Windows Capture Options dialog box. Fill in this dialog box as described in the [How to Capture Screens Using the Hotkeys](#) procedure earlier in this chapter. Click on OK.
- 8 Double-click on the HiJaak PRO icon to restore it to its Main screen. You can now edit the image as described in [Chapter 3](#), or convert the image as described in [Chapter 4](#).

# Capturing a DOS Screen or Printer Output

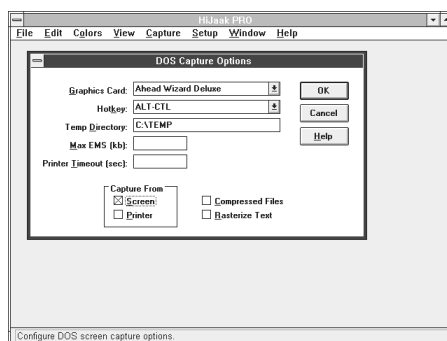
Using HiJaak PRO's DOS Capture utility, you can either capture screens from programs running under DOS, or you can print a file from a DOS application and capture it before it reaches your printer. Capturing data on the way to the printer is called "print trap." This section first explains how to capture a screen in a program running under DOS, then it explains how to capture printer output.

**Note:** The following describes how to capture a DOS screen. If you want to learn how to capture a Windows screen, see [Chapter 5: Capturing a Windows Screen](#). If you want to learn how to capture Windows print output, see your Windows manual for instructions on printing to a file.

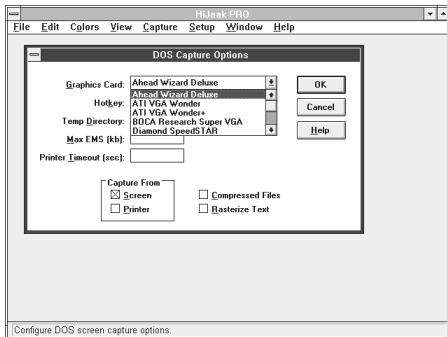
**Note:** You are using a DOS screen if you do not start Windows or if you start a DOS shell from the Windows "DOS Prompt" icon. Be aware that some programs that can be started from Windows icons are actually using DOS screens — they have a certain DOS "look" about them. If in doubt, consult the section in your Windows manual that describes the Windows PIF editor. If a program is started through a PIF file with the window attribute set to "full screen," then the program is using a DOS screen.

## How to Capture a Screen in the DOS Environment

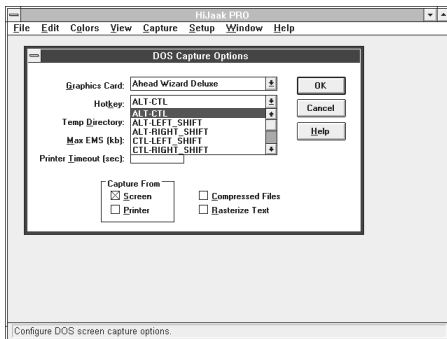
- 1 From the HiJaak PRO Main screen, pull down the Capture menu and select DOS Capture Options. You will see the DOS Capture Options dialog box.



Step 1: DOS Capture Options Dialog Box



*Step 2: Specify Graphics Card*



*Step 3: Specify Hotkey*

Capturing in DOS

- 2 Pull down the Graphics Card area of the screen. Click on the type of graphics card in your computer.
- 3 Note the default in the Hotkey area of the screen. If you have never changed this option, it will be Alt + Ctrl. These are the two keys that, when pressed at the same time, will initiate HiJaak PRO Capture later in this procedure. Do not change this unless this key combination conflicts with a memory resident program you have installed.
- 4 [OPTIONAL] The following steps are optional and can be changed at any time.

- ❑ If you do not want HiJaak PRO to store temporary processing files in the default subdirectory indicated, click on the Temp Directory area of the screen and enter the path to the directory you want HiJaak PRO to use for temporary files.
- ❑ If you have EMS memory in your computer and you want to reserve some for other applications, you can type in the maximum amount (in Kbytes) of EMS memory that you want to allocate to HiJaak PRO. If you leave this space blank, DOS Capture will use as much EMS as is available.
- ❑ If disk space is at a premium, click on Compressed Files. The files will be compressed, but will take longer to process.
- ❑ If your DOS text screen captures contain non-standard fonts, such as those with certain foreign language text characters, then click on the Rasterize Text check box. If you rasterize text, you will not be able to edit fonts using Change a Font.



- 5 In the Capture From area of the screen, click on Screen. Make sure that Printer is not checked. Click on OK.
- 6 Double-click on the DOS Capture icon located in the HiJaak PRO program group.
- 7 Run the application which has the screen you want to capture, and bring up that screen.
- 8 Press the hotkeys at the same time. If you did not change the default, these will be Alt+Ctrl.



- 9 You will see a menu prompting you to fill in the path and filename of the file you will be creating with this capture. Type the path and filename with an IGF file extension. Press Enter. HiJaak PRO stores the captured screen in the file. If you leave off the IGF extension, the file extension will default to the IGF format. DOS Capture only supports capturing the image in IGF format. You can use HiJaak PRO to convert from IGF to another format later.

*Step 9: After Pressing the Hotkeys*

- 10 Bring up the next screen you want to capture. You can continue to press the Alt+Ctrl hotkeys and fill in the filenames until you have captured every screen you want to capture. The program will automatically increment a numeral in the filename you specified in step 9 each time you capture. For example, if you entered **c:\screens\example1.igf** as the first capture file in step 9, HiJaak PRO will make the next capture **c:\screens\example2.igf**.
- 11 When you are finished, exit your application. At the DOS prompt, type:

**EXIT**

**Note:** You can also run the DOS Capture utility by shelling out to DOS, or exiting Windows and typing **doscap** at the DOS prompt. Once you are in DOS, you can press the hotkeys to capture a screen at any time. When you have finished capturing screens, type **freecap** at the DOS prompt. If you do not free DOSCAP, you can continue taking DOS screen shots using the hotkeys. However each time you re-boot your computer, you will need to reload DOSCAP by changing to the HiJaak PRO subdirectory and typing

*doscap.* If you exit Windows instead of using the icon, you must set an environment variable with a path to your Windows directory. For example, `SET WINDIR=C:\WINDOWS`.

**Note:** To capture a DOS screen running in an MDI window under Windows 386 enhanced mode, use the Windows Capture option Window/Object. To run DOSCAP, the window must be maximized, filling the entire screen.

### How to Capture Printer Output

Capturing data on the way to the printer is called "print trap." HiJaak PRO can edit or convert the following types of print files:

- HP LaserJet II** (PCL 4 files)
- HP Plotter** (HP 7475A Plotter files)
- Generic ASCII Text** (TXT files)

- 1 From the HiJaak PRO Main screen, pull down the Capture menu and select DOS Capture Options. You will see the DOS Capture Options dialog box.
- 2 Pull down the Graphics Card area of the screen. Click on the type of graphics card in your computer.
- 3 Note the default in the Hotkey area of the screen. If you have never changed this option, it will be Alt + Ctrl. These are the two keys that, when pressed simultaneously, will initiate DOSCAP later in this procedure. Do not change it unless this key combination conflicts with a memory-resident program you have installed.
- 4 [OPTIONAL] The following steps are optional and can be changed at any time.
  - If you do not want HiJaak PRO to store temporary processing files in the default subdirectory indicated, click on the Temp Directory area of the screen and enter the path to the directory you want HiJaak PRO to use for temporary files.
  - If you have EMS memory in your computer and you want to reserve some for other applications, you can type in the maximum amount (in Kbytes) of EMS memory that you want to allocate to HiJaak PRO. If you leave this space blank, Print Trap will use as much EMS as is available.

- ❑ To increase the Printer Time-out, type in the number of seconds you want HiJaak PRO to wait before assuming an application has finished printing.

**Note:** Information is sent to the printer at irregular intervals; it may take 5 to 20 seconds or more to reach the printer. If no information has been sent for 15 seconds, HiJaak PRO assumes that the print job has been completed. This 15 seconds is the default Printer Time-out value. If you are only getting a portion of your print-out, you may need to increase this value.

- 5 In the Capture From area of the screen, click on Printer. Make sure Screen is not checked. Click on OK.
- 6 Double-click on the DOS Capture icon located in the HiJaak PRO program group.
- 7 Set up your application to print the desired file to a parallel printer port (for example lpt1:), but do not print yet.
- 8 Press the hotkeys at the same time. If you did not change the default, these will be Alt+Ctrl.



Step 9: Naming the Print Trap File

- 9 You will see a menu prompting you to fill in the path and filename of the file you will be creating by doing this capture. Type a path and filename if you want to edit the filename. If the printer output is HP PCL, HPGL, or TXT, HiJaak PRO can convert it to other formats. See Chapter 4: Converting an Image from One Format to Another. Select the output type appropriate for your printer.
- 10 Print as you normally would from your application to the parallel printer port. HiJaak PRO DOS Capture will capture the output on the way to the printer and route it to the file.

- 11 When you are finished, exit your application and from the DOS prompt type:

**EXIT**

**Note:** You can also run the Print Trap utility by shelling out to DOS or exiting Windows and typing **doscap** at the DOS prompt. Once you are in DOS, you can press the hotkeys to capture print data at any time. When you have finished, type **exit** at the DOS prompt. If you do not exit, you can continue capturing print information using the hotkeys. However each time you re-boot your computer, you will need to reload print trap by changing to the HiJaak PRO subdirectory and typing **doscap**. If you exit Windows instead of using the icon, you must set an environment variable with a path to your Windows directory. For example, SET WINDIR=C:\WINDOWS.

## Changing Your Setup

The HiJaak PRO Main menu has a Setup menu that allows you to customize HiJaak PRO as follows:

**CONFIGURE FAX** allows you to select the kind of fax card you have, if any.

**CONFIGURE CONVERT** allows you to change the buffer size HiJaak PRO will use during conversions and specify what directory will be used as the temporary directory during conversions.

**FORMAT EXTENSIONS** allows you to change which three-letter filename extension HiJaak PRO associates with a particular format. It also allows you to associate a file type in Windows File Manager.

**LOAD SETTINGS** and **SAVE SETTINGS** allow you to save and reload the configuration files containing the option settings of frequently used file conversions.

**PREFERENCES** allows you to select Background Color, Display Palette (Auto or Fixed), Reduction Method (Snap, Dither, Halftone, or Diffuse), Unit of Measure (Centimeters or Inches) and Curve Quality.

Each of these is described in more detail below.

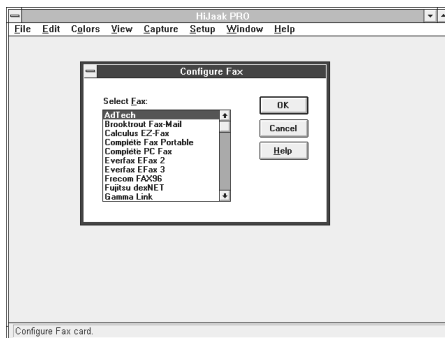
## Configuring HiJaak PRO for Your Fax Card

Fax formats vary substantially. To deal with this problem, HiJaak PRO allows you to specify the kind of fax board you have so that when you convert to a fax format, the converted image will be compatible with your particular fax card. A complete list of the fax cards supported by HiJaak PRO is in the format table at the beginning of [Chapter 2](#).

**Note:** If you select a fax device, such as GammaLink, that uses a flavor of TIF, that flavor will be used whenever you open or convert a file in the TIF format.

### How to Configure HiJaak PRO for Your Fax Card

- 1 From the Main screen, pull down the Setup menu and click on Configure Fax. You will see the Configure Fax dialog box.



Step 1: Configure Fax

- 2 Click on the scroll bar to scroll to the name of the fax card installed in your computer.
- 3 Click on the name of your fax card.
- 4 Click on OK. You are now ready to convert images to or from your installed fax card's format. Converting a file is described in [Chapter 4: Converting an Image from One Format to Another](#).

**Tip:** If your fax device is not on the list, select Generic Fax.

## Configuring Convert

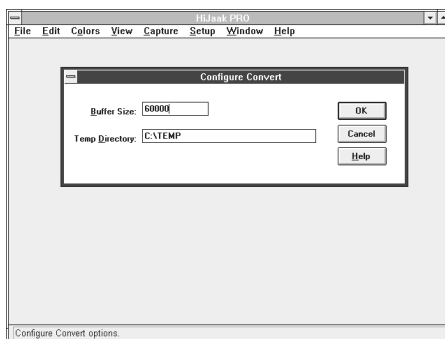
The Configure Convert option allows you to change HiJaak PRO variables that affect memory and speed during a file conversion.

**BUFFER SIZE:** During a conversion, HiJaak PRO uses a buffer whose size depends on the kind of conversion being performed. The default buffer size is 60000; this is the maximum. If you get an “Insufficient Memory” error, type 10000 in the buffer field. If you still get the error message, type 8000. Smaller numbers allow HiJaak PRO to handle larger conversions, but slow down the conversion process. If you are not having problems, leave this field blank.

**TEMP DIRECTORY:** During a conversion, HiJaak PRO uses the temporary directory defined by Windows as an environment variable. This directory can only grow as large as the amount of disk space free on the drive that contains your temporary environment variable. If you do not want to use the Windows temporary directory, you can specify another directory in the Configure Convert dialog box. If, for example, you type in the path to a RAM disk you have created, conversions might be quicker.

### How to Configure Convert

- 1 From the Main screen, pull down the Setup menu and click on Configure Convert. You will see the Configure Convert dialog box.



*Step 1: Configure Convert*

- 2 [OPTIONAL] In the Buffer area, type in the size of the buffer.
- 3 [OPTIONAL] Click on the Temp Directory area. Backspace over the current temp directory path and type in the path you desire if it is different from the current path.
- 4 Click on OK.

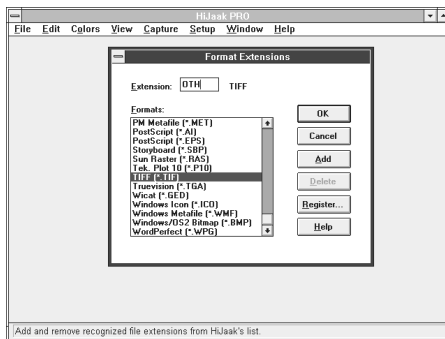
## Setting Up Format Extensions

Using the Format Extension feature, HiJaak PRO allows you to change which extensions it associates with a particular format. This is helpful if all your files in a particular format have a nonstandard extension. For example, if all your TIFF files have the extension OTH, you can use this feature to make HiJaak PRO recognize OTH extensions as TIFF files.

The Format Extensions feature also allows you to associate a file type with the file manager. For example, you can configure HiJaak PRO to immediately open an OTH file (as a TIFF file) when you double-click on the filename in the File Manager.

### How to Change or Add Format Extension Associations

- 1 Pull down the Setup menu and click on Format Extensions. You will see the Format Extensions dialog box.



Step 1: Format Extensions Dialog Box

- 2 In the Formats list, scroll to the file format you want to associate with a particular extension. In the above example, you would highlight TIFF.
- 3 Click in the Extension area. Type the extension you want to have associated with the highlighted format. In the above example, you would type OTH.
- 4 To add another extension, click on Add. Repeat steps 2 and 3 for each association you wish to add.
- 5 When you have no more associations to make, click on OK to accept the associations you have added. You will return to the Main menu.

**Note:** You cannot use a file extension currently in use by HiJaak PRO for an alias of another format. For example, you cannot use PCX as an alias for TIF, because PCX is already associated with PC Paintbrush.

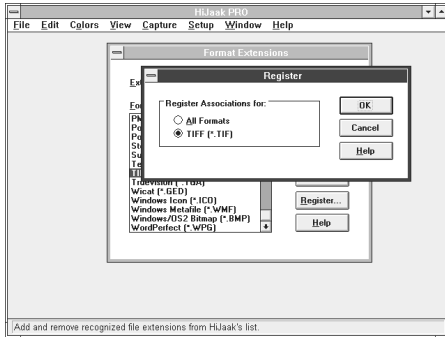


### How to Delete a Format Extension

- 1 Pull down the Setup menu and click on Format Extensions. You will see the Format Extensions dialog box.
- 2 In the Formats list, scroll to the file format you want to delete.
- 3 Once your file format name is highlighted, click on Delete. Click on OK.

### How to Register the Extension Associations With the Windows File Manager

- 1 Pull down the Setup menu and click on Format Extensions. You will see the Format Extensions dialog box.



Step 3: Register Dialog Box

- 2 Click on the format type you would like to register with the File Manager.
- 3 Click on Register. You will see the Register dialog box.
- 4 Click on either the format type you selected in step 2, or All Formats, to associate with the File Manager.
- 5 Click on OK to return to the Formats Extensions dialog box. Click on OK again to accept your changes and return to the Main menu.

---

## Loading and Saving Set Files

Every time you convert a file or capture a screen, the options you have set are saved in a "set file." Those options become the default option settings for the next time you start HiJaak PRO and perform the same type of conversion. If you do not set new options, HiJaak PRO will use the same option settings as the last time. This "sticky" feature of HiJaak PRO allows you to perform complex operations repeatedly without having to specify options each time.

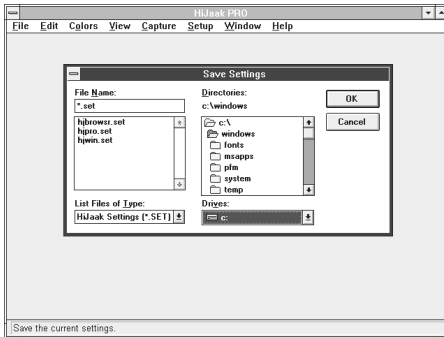
Settings can get you into trouble if you are not careful. If, for example, you have a lot of PCX files that you routinely convert to TIFF to import into Ventura Publisher, you might want to always substitute a magenta with a particular blue, and you might want to specify the Ventura Publisher application flavor of TIFF. This would work fine until you decide to perform the same operation (convert from PCX to TIFF) to import into PageMaker with no color changes necessary.

To deal with this problem, you could set all the options for your Ventura Publisher conversion, perform the conversion, then save the settings as "ventura.set." This is described in [How to Save Settings](#), below. You would then do the same for your PageMaker conversion, but save the settings as "pagemak.set." Then, before doing a PageMaker conversion, you would go into Load Settings and select pagemak.set. Loading settings is described in [How to Load Settings](#) later in this chapter.

If you have made a lot of option changes, you may wish to restore the original defaults that were shipped with HiJaak PRO. This is described in [How to Re-load the Original Settings](#) later in this chapter.

## How to Save Settings

- 1 Complete the operation with the settings you would like to save as the default. For example, set all the options and then either convert the file or capture the screen.



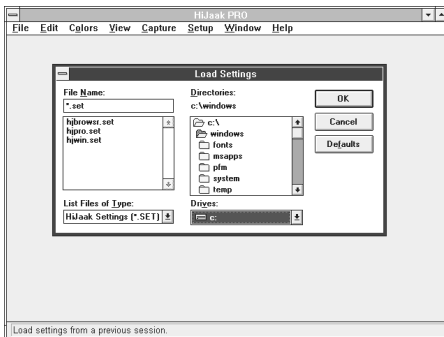
Step 2: Save Settings Dialog Box

- 2 From the Main menu, pull down the Setup menu and click on Save Settings. You will see the Save Settings dialog box.
- 3 HiJaak PRO will look for the set file in the directory where your Windows win.ini file is. Unless you are on a network and are sharing set files, you will probably want to leave the Directories, Drives, and List Files of Type areas of the window unchanged.

- 4 Click on the File Name area of the window. Type in the name under which you want to save your set file.
- 5 Click on OK.

## How to Load Settings

- 1 When you need the saved settings, pull down the Setup menu and click on Load Settings. You will see the Load Settings dialog box.



Step 1: Load Settings Dialog Box

- 2 Select the drive and directory where you saved the set file.
- 3 In the File Name area of the screen, click on the name of the set file you want to load.
- 4 Click on OK to load the set file.

### How to Re-load the Original Settings

- 1 Before performing an operation to which you want to apply the original default settings, pull down the Setup menu and click on Load Settings. You will see the Load Settings dialog box.
- 2 Click on the Defaults button to load the original settings.

---

## Preferences

**H**iJaak PRO allows you to control your image's background color, the screen display palette, the color reduction method, the unit of measure, and the curve quality you want to use in HiJaak PRO.

**BACKGROUND COLOR:** The Background Color feature lets you change the background color in vector images and the padding color in raster images.

**PALETTE DISPLAYED:** The Palette Displayed controls will only work on a 256 color monitor. The selections (Auto and Fixed) change the behavior of the "palette," or set of colors on your monitor.

**REDUCTION METHOD:** The Reduction Method options allow you to control color processing for viewing.

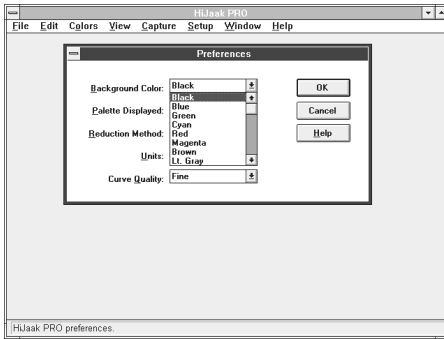
**UNITS:** The Units option allows you to specify either centimeters or inches. HiJaak PRO will use this as the unit of measure throughout the program.

**CURVE QUALITY:** The Curve Quality selection determines the smoothness of the lines HiJaak PRO will create in a destination file. Curve Quality is only valid when converting files that contain a special kind of complex curve called a Bezier curve. If your image does not contain Bezier curves, this option will have no effect on the image. The three quality selections are Fine, Medium and Coarse. The finer the line, the longer the processing time during conversion and the larger the resulting file, but the better the image quality will be.

**STATUS BAR:** The Status Bar option allows you to choose what information you want displayed in the bar at the bottom of the HiJaak PRO Main screen. You have two choices: Show Cancel Button and Show Percent Done. The Cancel Button lets you stop any processing option by clicking on it. The Show Percent Done option lets you see the progress of any processing option. The default for both options is on.

## How to Change Background Color

- 1 To change the Background Color, from the Main menu, pull down the Setup menu and click on Preference. You will see the Preferences dialog box.

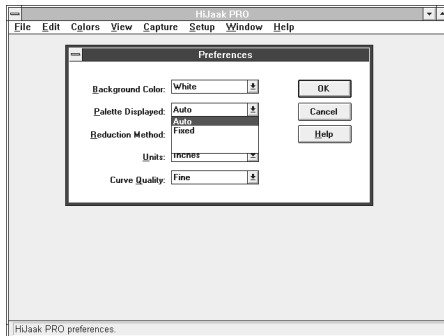


*Step 2: Background Color List*

- 2 Click on the down arrow next to Background Color to pull down the Background Color list.
- 3 Click on the color you want as the background.

## How to Change the Palette Displayed

- 1 To change the Palette Displayed, from the Main menu, pull down the Setup menu and click on Preference. You will see the Preferences dialog box.



*Step 2: Palette Displayed List*

- 2 Click on the down arrow next to Palette Displayed to pull down the Palette Displayed list.
- 3 Click on the selection you want. Each is described below.

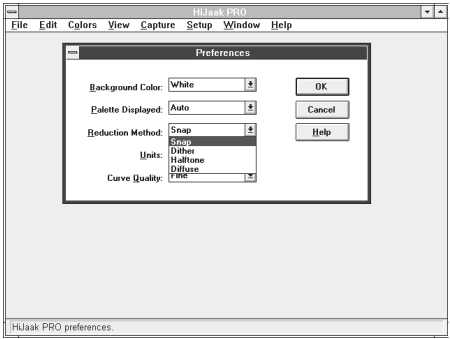
**AUTO:** This is the default display palette. If you have one image open and you choose Auto, the palette of the image becomes variable. That is, the palette of the active image becomes the dominant palette. Background images will be re-painted with the dominant palette. If you have more than one image open and you select Auto, the palette becomes fixed.

**FIXED:** When you choose Fixed, all images on the screen will share the same palette. This setting will not produce the optimal result for any particular image, but it will eliminate background image processing and is therefore faster.

**Note:** *If you want to change colors on other standard Windows areas such as the title bar, application workspace, etc., click on the Colors selection in the Windows Control Panel.*

**How to Change the Color Reduction Method**

1 To change the color reduction method, from the Main menu, pull down the Setup menu and click on Preferences. You will see the Preferences dialog box.



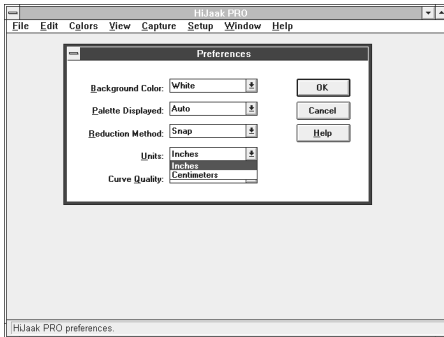
2 Click on the down arrow next to Reduction Method to pull down the Reduction Method list.

3 Click on the color reduction method you want HiJaak PRO to use when viewing an image. Each option was described in the Reduce Colors section of [Chapter 3: Changing the Look of an Image](#).

Step 2: Reduction Method List

### How to Change the Default Unit of Measure

- 1 To change the default unit of measure, from the Main menu, pull down the Setup menu and click on Preferences. You will see the Preferences dialog box.

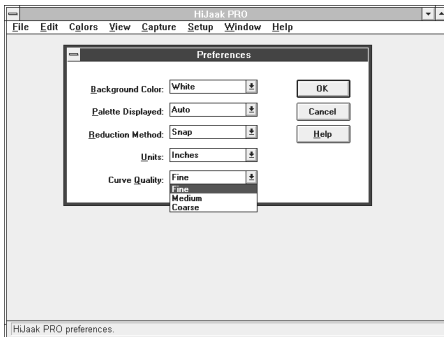


*Step 2: Units of Measure*

- 2 Click the down arrow next to Units to pull down the Units of Measure list.
- 3 Click on the Unit of Measure you want HiJaak PRO to use as the default throughout the program.

### How to Change Curve Quality

- 1 To change the Curve Quality, from the Main menu, pull down the Setup menu and click on Preferences. You will see the Preferences dialog box.



*Step 2: Curve Quality List*

- 2 Click on the down arrow next to Curve Quality to pull down the Curve Quality list.
- 3 Click on the Curve Quality you want HiJaak PRO to use. You have the choice of Fine, Medium and Coarse.





## Using HiJaak PRO in Your Work

**Y**ou can use HiJaak PRO with most software applications and graphics hardware. Using the HiJaak PRO Object Linking and Embedding (OLE) feature, you can link or embed objects into any client application. Using the HiJaak Retrieve Macro, you can import supported files into WordPerfect for Windows. Using HiJaak PRO import filters, you can import files in any HiJaak PRO supported format into any application that supports the Aldus graphic import filter specification.

HiJaak PRO also supports TWAIN. TWAIN is a protocol developed by leading graphics hardware and software developers, which allows you to bring images into HiJaak PRO from your graphics hardware. Using OLE or HiJaak PRO graphic import filters, you can import these images into your documents, presentations, spreadsheets, etc. The following types of hardware may be compatible with TWAIN:

- Desktop Scanners
- Hand-held Scanners
- Slide Scanners
- Frame Grabbers
- Digital Cameras

---

## Using HiJaak Import Filters

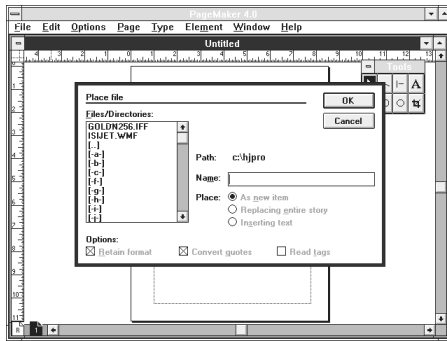
**H**iJaak import filters follow the Aldus graphics import filter specification. The HiJaak import filter allows applications that support the Aldus specification to import graphics in any of the more than 70 formats that HiJaak PRO supports. The following sections describe how to use HiJaak import filters to import files into the following applications:

- PageMaker
- Persuasion
- FreeHand
- Ami Pro
- Word for Windows
- PowerPoint

*Note: If you install any of these applications after you install HiJaak PRO, you can still use HiJaak import filters. Double-click on the HJSetup icon located in your HiJaak PRO program group. Select Import Filter Install and follow the instructions on your screen to add HiJaak import filter support to your new applications.*

## How to Import an Image into PageMaker

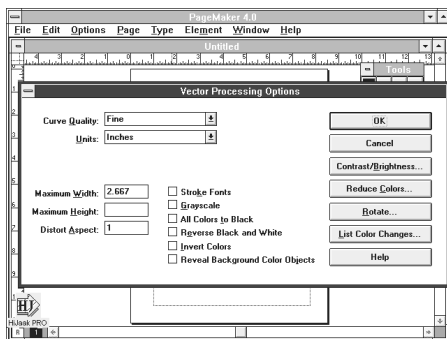
- 1 Start up PageMaker and open the document into which you want to import an image.



Step 2: Pagemaker Place Dialog Box

- 2 From the File menu, select Place. You will see the Place dialog box.
- 3 From the Files/Directories list box, select the path and filename of the image that you want to import.

- 4 [OPTIONAL] If you want to set processing options, press and hold the Shift key as you click on OK. You will see the HiJaak PRO Processing Options dialog box. Select your options. For more information on Options, see [Chapter 3: Changing the Look of an Image](#).

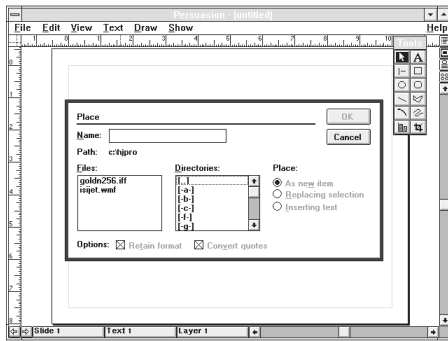


Step 4: HiJaak Import Options Dialog Box

- 5 Click on OK. You will see the HiJaak Import status box, showing percent completion of the import. When the file has successfully imported, the status box disappears and you will see the PageMaker Place cursor. Click in the document where you want the upper-left corner of the image to appear.

## How to Import an Image into Persuasion

- 1 Start up Persuasion and open the document into which you want to import an image.



Step 3: Persuasion Place Dialog Box

- 2 Pull down the View menu and select Slide.
- 3 Pull down the File menu and select Place. You will see the Place dialog box.
- 4 From the Directories list box, select the drive and directory of the file you want to place.
- 5 In the Files list box, click on the filename of the image you want to import.
- 6 [OPTIONAL] If you want to set processing options, press and hold the Shift key as you click on OK. You will see the HiJaak PRO Processing Options dialog box. Select your options. For more information on Options, see [Chapter 3: Changing the Look of an Image](#).

- 7 Click on OK. You will see the HiJaak Import status box, showing percent completion of the import. When the file has successfully imported, the status box disappears and you will see the Persuasion Place cursor. Click in the document where you want the upper-left corner of the image to appear.

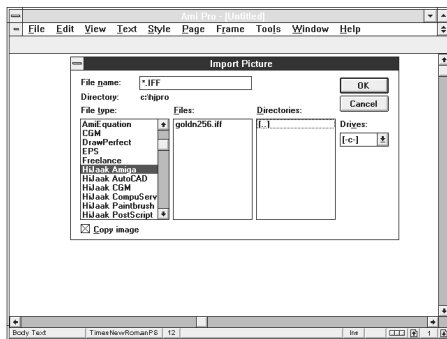
## How to Import an Image into FreeHand

- 1 Start up FreeHand and open the document into which you want to import an image.
- 2 Pull down the File menu and select Place. You will see the Place dialog box.
- 3 In the Directories list box, select the drive and directory of the file you want to place.
- 4 In the Files list box, click on the filename of the image you want to import.

- 5 [OPTIONAL] If you want to set processing options, press and hold the Shift key as you click on OK. You will see the HiJaak PRO Processing Options dialog box. Select your options. For more information on Options, see [Chapter 3: Changing the Look of an Image](#).
- 6 Click on OK. You will see the HiJaak Import status box, showing percent completion of the import. When the file has successfully imported, the status box disappears and you will see the FreeHand Place cursor. Click in the document where you want the upper-left corner of the image to appear

### How to Import a Picture into Ami Pro

- 1 Start up Ami Pro and open the document into which you want to import a picture.

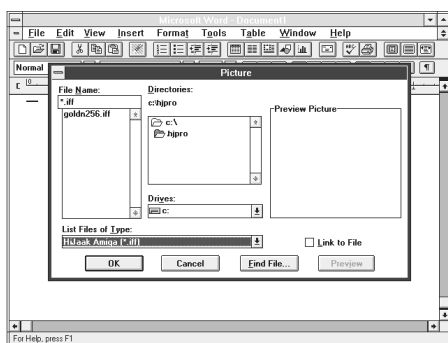


*Step 3: Ami Pro Import Picture Dialog Box*

- 2 Place the cursor at the point you would like the upper-left corner of the image to appear.
- 3 Pull down the File menu and click on Import Picture. You will see the Import Picture dialog box.
- 4 From the File type field, select the file format type you want to import. If, for example, you wanted to import a file in the Amiga IFF format, you would click on HiJaak Amiga.
- 5 From the Drives pull down, select the drive of the file you want to import. From the Directories list box, select the directory, and from the Files list box select the image you want to import. Click on OK.
- 6 You will see the HiJaak PRO Processing Options dialog box. Select your options. For more information on Options, see [Chapter 3: Changing the Look of an Image](#).
- 7 Click on OK. You will see the HiJaak Import status box, showing percent completion of the import. When the file has successfully imported, the status box disappears and the image appears in the Ami Pro document at the point you selected.

## How to Import a Picture into Word for Windows

- 1 Start up Word for Windows and open the document into which you want to import a picture.



Step 3: Word Picture Dialog Box

- 2 Place the cursor at the point you would like the upper-left corner of the image to appear.
- 3 Pull down the Insert menu and select Picture. You will see the Picture dialog box.
- 4 From the Drives pull down, select the drive of the file you want to import. From the Directories list box, select the directory of the file you want to import.
- 5 In the File Name area, select the filename of the picture you want to import.

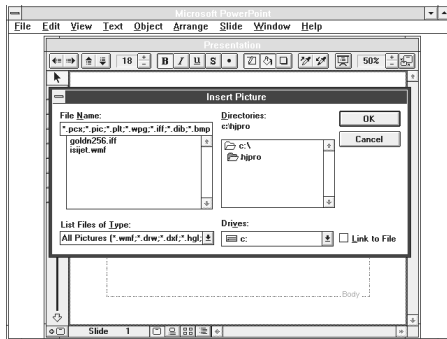
- 6 Click on OK. You will see the HiJaak PRO Processing Options dialog box. Select your options. For more information on Options, see [Chapter 3: Changing the Look of an Image](#).

- 7 Click on OK. You will see the HiJaak Import status box, showing percent completion of the import. When the file has successfully imported, the status box disappears, and the image appears in the Word document at the point you selected.

*Note: Word for Windows supports a 16 color display and a 256 color print-out. If you are importing a 256 color graphic into Word, it might not display as you expect; it will, however, print as you expect. If the display of your 256 color image is more important to you than the appearance of the printed image, then use HiJaak PRO to reduce the number of colors to 16. From the HiJaak PRO Colors menu, select Reduce Colors. In the Number of Colors field, select 16. Click on the Optimize Palette check box. HiJaak PRO will match the closest 16 colors to those in your 256 color image.*

## How to Import a Picture into PowerPoint

- 1 Start up PowerPoint and open the document into which you want to import a picture.



*Step 3: PowerPoint Insert Picture Dialog Box*

- 2 Pull down the Edit menu and select Insert. You will see the Insert side menu.
- 3 Select Picture. You will see the Insert Picture dialog box.
- 4 From the Drives pull down, select the drive of the file you want to import. From the Directories list box, select the directory of the file you want to import.
- 5 In the File Name area, select the filename of the picture you want to import.
- 6 Click on OK. You will see the HiJaak PRO Processing Options dialog box. Select your options. For more information on Options, see [Chapter 3: Changing the Look of an Image](#).
- 7 Click on OK. You will see the HiJaak Import status box, showing percent completion of the import. When the file has successfully imported, the status box disappears and the image appears in the PowerPoint presentation at the point you selected.

## Using HiJaak PRO with WordPerfect for Windows

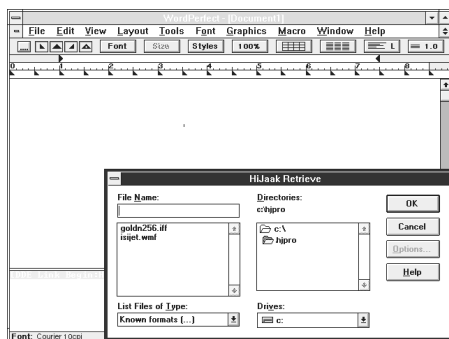
**H**iJaak PRO is linked to WordPerfect for Windows through WordPerfect's Macro facility via a DDE link. (DDE is an acronym for Dynamic Data Exchange.) This link is set up by HiJaak PRO when you perform either a Full install, or a Custom install with Application Interfaces. This install adds the "HiJaak Retrieve" item to WordPerfect's Macro menu. This link is useful because, once selected, the HiJaak Retrieve item instantly starts up HiJaak PRO and allows you to place a file into WordPerfect in any one of more than 70 formats supported by HiJaak PRO. The HiJaak Retrieve Macro automatically converts the files to formats WordPerfect can read.

*Note: WordPerfect 5.2 also allows you to import using Object Linking and Embedding (OLE). See the section on OLE later in this chapter.*

### How to Retrieve a Graphics File Using the HiJaak Retrieve Macro

*Warning: When you use the HiJaak Retrieve Macro, any information that you have previously copied to the clipboard will be deleted.*

1 Start up WordPerfect for Windows and open the file into which you want to place a graphic. If you are creating a new document, you must save it before trying to import a HiJaak object through the macro link.



Step 3: The HiJaak Retrieve Dialog Box

2 Place your cursor at your desired insertion point.

3 Pull down the Macro menu. Select HiJaak Retrieve. HiJaak PRO starts up, and the HiJaak Retrieve dialog box appears on the screen. A WordPerfect Macro Facility icon and a HiJaak PRO icon appear at the bottom of the screen (you may have to reduce the size of your WordPerfect window in order to see these icons).

4 Select the graphics file you want to import. Click on OK.

5 Using your current set file options, HiJaak PRO converts this image and places it into your WordPerfect document at your specified insertion point.

6 When you have no more files to retrieve, click on the HiJaak PRO icon and select Close.

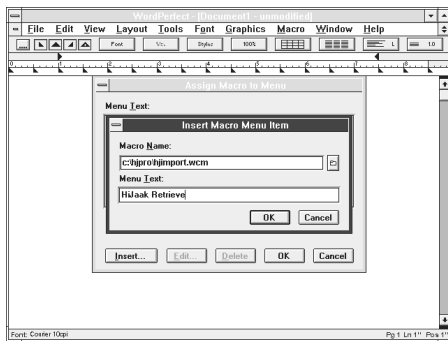


*Note: HiJaak PRO remains active so you may retrieve additional files through the Macro menu.*

### How to Manually Install the Macro Link

If you want to manually set up the DDE link between HiJaak PRO and WordPerfect for Windows, or if you install WordPerfect for Windows after HiJaak PRO, follow this procedure to install the macro link:

- 1 From the WordPerfect Main menu, pull down the Macro menu and select Assign to Macro. You will see the Assign Macro to Menu dialog box.



Step 2: Insert Macro Menu Item Dialog Box

- 2 Click on Insert. You will see the Insert Macro Menu Item pop up box.

- 3 In the Macro Name field, type your path to HiJaak PRO followed by the filename HJIMPORT.WCM. (This must be in a writable directory). If, for example, you installed in the default directory, you would type:

c:\hjpro\hjimport.wcm

- 4 In the Menu Text field, type:

HiJaak Retrieve

- 5 Click on OK to exit each of the dialog boxes. HiJaak Retrieve is added to your Macro menu.

HiJaak PRO must be in your search path in order for the HiJaak Retrieve Macro to work properly. If it is not in your search path, you will get the WordPerfect error message: "Error Loading HiJaak - Error2!" To put HiJaak PRO in your search path, first open your AUTOEXEC.BAT file in an ASCII editor. Find the statement in your AUTOEXEC.BAT file that begins with PATH= and move to the end of that line. Add your HiJaak PRO directory to the list. (Subdirectories must be separated by semicolons.) See the following example:

*Existing Path:* Path = C:\C:\WIN;C:\B\AT

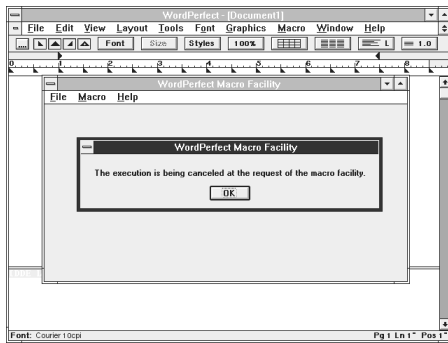
*Modified Path:* Path = C:\C:\WIN;C:\B\AT;C:\HJPRO

After you save your file in ASCII format, you must re-boot your machine in order for the new Path statement to take effect.

## How to Cancel the HiJaak Retrieve Import

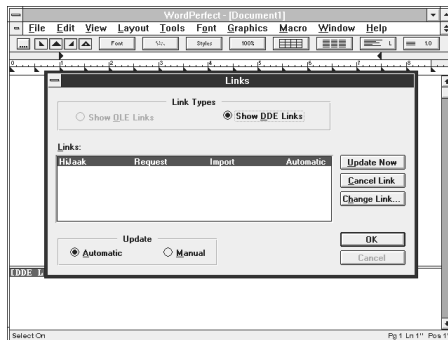
If you are encountering problems with the HiJaak Retrieve import, you may want to cancel it. Follow the procedure below.

- 1 Double-click on the WordPerfect Macro Facility icon. You may have to minimize WordPerfect in order to see this icon. The Macro Facility screen appears.



*Step 2: Terminating the Macro*

- 2 From the Macro menu, select Terminate Macro. You will receive the message, "The execution is being terminated at the request of the Macro Facility." Click on OK.
- 3 Pull down the File menu and select Exit.
- 4 Click on the HiJaak PRO icon and select Close.
- 5 From the WordPerfect Main menu, select Edit.
- 6 Select Links. You will see the Links dialog box. In the Link Types field, click on Show DDE Links.



*Step 6: The Links Dialog Box*

- 7 Click on HiJaak Request Import Automatic. Click on the Cancel Link button. Click on OK. The link between HiJaak PRO and WordPerfect for Windows is canceled.

---

## Using HiJaak PRO with File Manager

**H**iJaak PRO integrates with Windows 3.1 File Manager to select files for viewing and printing using "double-clicking" and "Drag-Drop." With this capability, you can use HiJaak PRO as a quick file viewer for all HiJaak PRO-supported source formats. Once you are viewing the image, you can edit, process, or convert it.

Before you can use these capabilities, you must make associations between HiJaak PRO and the desired formats. You do this by registering HiJaak PRO with its compatible file formats. See [Chapter 7: Changing Your Setup](#) for more information.

### Using HiJaak PRO as a File Viewer

There are two ways to view files from File Manager. One uses double-clicking, the other uses Drag-Drop.

#### How to View an Image Using Double Clicking

- 1 Open File Manager.
- 2 Select the appropriate directory and double-click on the name of the image file you would like to view. HiJaak PRO automatically starts up and views the file.
- 3 When finished viewing, pull down the File menu and select Exit.

### How to View an Image Using Drag-Drop

- 1 Open HiJaak PRO by double-clicking on its icon.
- 2 Click on the down arrow in the upper-right corner of the HiJaak PRO Main screen to minimize it into a running icon.
- 3 Open File Manager.
- 4 Select the appropriate directory and click and hold the mouse button down on the name of the image file you would like to view. The file name will become highlighted and the file will turn into an icon when you drag.
- 5 Drag the file icon to the HiJaak PRO icon and drop it there by releasing the mouse button.
- 6 Click on the HiJaak PRO icon and select Restore. The HiJaak PRO Main screen will open, allowing you to view the file you selected.

You may also use HiJaak PRO Drag-Drop capabilities when its Main screen is open by dropping the file icon directly on the open window.

You may even use this Drag-Drop capability if the HiJaak PRO icon is inactive. If you do this, the Program Manager will create another HiJaak PRO icon and give it the same name as your selected file. You view the file by double-clicking on the new icon. This second icon is useful if the contents of the file change frequently. After closing the file and exiting HiJaak PRO, you can delete the icon by clicking on it once and pressing the Delete key.

### How to View Multiple Images Using Drag-Drop

- 1 Open HiJaak PRO by double-clicking on its icon.
- 2 Click on the down arrow in the upper-right corner of the HiJaak PRO Main screen to minimize it into a running icon.
- 3 Open File Manager.
- 4 Press the left mouse button and hold down the Ctrl key while you click on each file you wish to view.
- 5 After you have selected your last file, release the Ctrl key, but continue to hold down the mouse button. Your selected files will turn into an icon when you drag.
- 6 Drag it to the the HiJaak PRO icon and drop it there by releasing the mouse button.
- 7 Double-click on the HiJaak PRO icon. The HiJaak PRO Main screen will open, allowing you to view the all the files you selected.

## Printing Files from File Manager

HiJaak PRO allows you to print files to the default printer directly from File Manager using Drag-Drop.

### How to Print from the File Manager

- 1 To open File Manager, double-click on its icon
- 2 Double click on the Print Manager icon. Click on the down arrow in the upper-right corner of the window to minimize it into a running icon.
- 3 Select the file you would like to print by clicking on it once and holding the mouse button down. The file will turn into an icon when you drag.
- 4 Drag the file icon to the Print Manager icon and drop it by releasing the mouse button.
- 5 You will see the HiJaak PRO Print dialog box. Specify your printing options and click on OK. The selected file is automatically sent out to the printer.

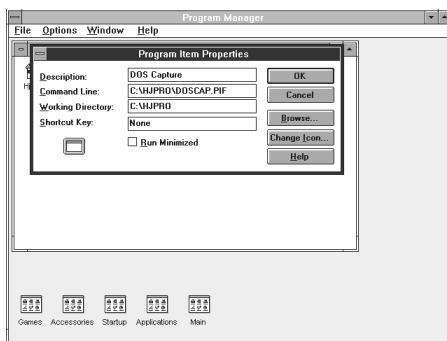
*Note: Windows allows you to drop only one file at a time on the Print Manager.*

## Adding Icons to the Program Manager

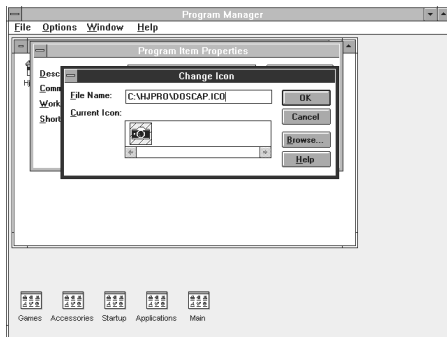
**H**iJaak PRO allows you to convert any supported file into an icon for use in the Windows Program Manager.

### How to Add an Icon to the Program Manager

- 1 Use HiJaak PRO to convert your graphics file to the ICO file format. Conversions are explained in [Chapter 4: Converting a File from One Format to Another](#).



*Step 3: The Program Item Properties Dialog Box*



*Step 4: The Change Icon Dialog Box*

- 2 In Windows Program Manager, click once on the icon you want to replace.
- 3 Pull down the Program Manager File menu and click on Properties. You will see the Program Item Properties dialog box.
- 4 Click on the Change Icon button. You will see the Change Icon dialog box.
- 5 Click on the Browse button. You will see the Browse dialog box.
- 6 Select the drive and directory where you saved your icon (\*.ICO) file. Click on the name of the file you want to use as your icon.
- 7 To change the selected icon, click on OK in each dialog box.

---

## Linking and Embedding HiJaak Objects in Your Applications

**H**iJaak PRO is an Object Linking and Embedding (OLE) Server. This feature allows you to place HiJaak objects, which are graphic images, into any client application. Client applications are usually desktop publishers and word processors. HiJaak PRO cooperates with OLE Clients to allow you to create documents containing a variety of images. These are called compound documents. Although the Windows cut and paste function is similar, OLE allows you to edit after you have inserted the object. You can easily manipulate images without ever leaving the document.

### When to Embed an Image

You should embed an image if you need one complete document. For example, if you plan to work on your document at different workstations, you need all that document's information saved in one file. Embedding allows this.

### When to Link an Image

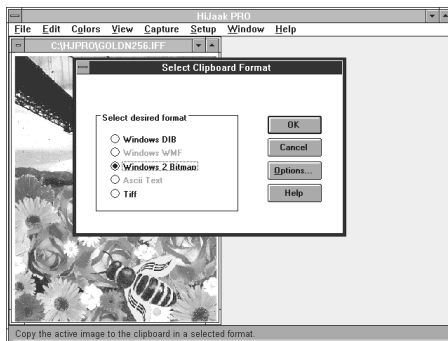
You should link an image when you want smaller file size. When you link, only the link joining the application, the object, and HiJaak PRO is saved with the client application, not the entire image file. This keeps file size small. Linking is particularly useful because it allows you to maintain graphics files separately from your document files. Use HiJaak PRO to edit the files and they update dynamically in your application.



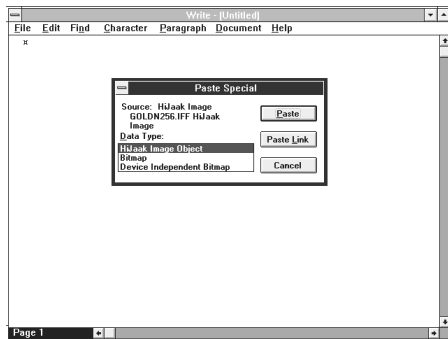
*Note: Many applications, such as Microsoft Word, Ami Pro, Ventura 4.0, WordPerfect 5.2, Write, and Excel, act as OLE clients. Since Write is available to all Windows users, it will be used as an example in the following procedures. The procedures for Windows Write are very similar to the procedures for other applications.*

## How to Link a HiJaak Image to a Write Document

- 1 Start HiJaak PRO.
- 2 Open the file that you want to link to your Write document.



*Step 3: Select Clipboard Format*



*Step 5: Paste Special Dialog Box*

- 3 Pull down the Edit menu and select Copy As. You will see the Select Clipboard Format dialog box. For raster images, select Windows 2 Bitmap. For vector images select Windows WMF. After selecting the appropriate format for your image, click on OK.
- 4 Double-click on the Windows Write icon to open the application. Write is usually located in the Accessories Program Group.
- 5 Pull down the Edit menu and select Paste Special. You will see the Paste Special dialog box.
- 6 From the Data Type list box, select HiJaak Image.
- 7 Click on Paste Link.
- 8 Your selected HiJaak image will appear in your document.

*Note: In step 7 of the above procedure, if you select Paste rather than Paste Link, you will embed the object in your document, rather than link it to your document.*

*Note on MS Word: When using OLE with HiJaak PRO and Word for Windows, Word will give you the choice in the Data Type list box between "HiJaak Image Object" and "Picture." To link the image, you must select Picture. To embed the image, you must select HiJaak Image Object.*

#### How to Edit a Linked HiJaak Image from the Write Document

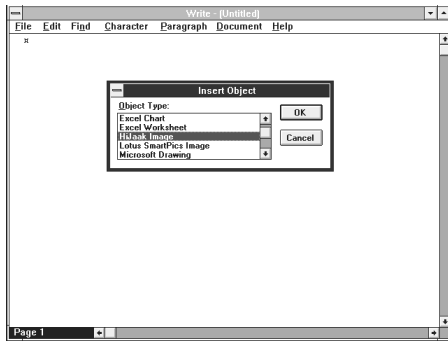
- 1 Double-click on the linked object.
- 2 HiJaak PRO starts up with the object appearing in the Main screen. Perform any of the editing functions available in HiJaak PRO.
- 3 Pull down the File menu and select Save.
- 4 Select Exit from the File menu. The linked object will be updated with your newest editing changes.

#### How to Edit a Linked HiJaak Image from HiJaak PRO

- 1 Start up HiJaak PRO and open the graphics file containing the linked object; perform any of the editing functions available in HiJaak PRO.
- 2 Pull down the File menu and select Save.
- 3 Pull down the File menu and select Exit.
- 4 Open Windows Write.
- 5 Open the document containing your linked object. You will receive a message asking if you want to update your document file with the edited version of the object. Select OK. File Manager updates the Write document with the edited object.

## How to Embed a HiJaak Image into a Write Document

- 1 Double-click on the Windows Write icon to open the application.

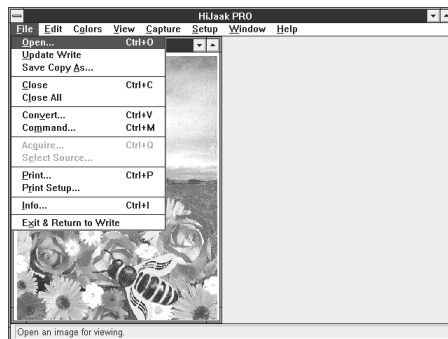


*Step 3: Insert Object Dialog Box*

- 2 Open the document into which you want to embed a HiJaak object. Scroll down in your document to the desired point of insertion, and place your cursor there.
- 3 Pull down the Edit menu by clicking on it once. Select Insert Object. You will see the Insert Object dialog box.

- 4 From the Object Type list box, select HiJaak Image and click on OK.

- 5 HiJaak PRO starts up and the Open dialog box appears. Select the image you want to embed into your Write document.



*Step 6&7: HiJaak Pro OLE File menu*

- 6 The HiJaak PRO Main screen appears with your selected file displayed. Pull down the HiJaak PRO File menu and select Update Write.
- 7 Processing occurs as the graphics file is embedded into your document. Pull down the File menu and select Exit and Return to Write.
- 8 HiJaak PRO closes, and the image appears in your document.

### How to Edit an Embedded HiJaak Image in a Write Document

- 1 Double-click on the embedded object. A frame with handles appears around the object, and HiJaak PRO starts up with the object appearing in the Main screen.
- 2 Perform any of the editing functions offered by HiJaak PRO.
- 3 Pull down the File menu and select Update Write.
- 4 Pull down the File menu and select Exit and Return to Write.

The editing changes you made to the object in HiJaak PRO will be updated in Windows Write due to the link between the two applications via this object.

*Note: In a 256 color display, many applications may not automatically repaint an OLE HiJaak Object after the display palette changes, or may only display one palette at a time. If each image in an open document has a special palette, they may not all display correctly. This is not a cause for concern. Regardless of the display, HiJaak PRO remembers the correct palette information.*

**If You Have Problems With Embedding:** The following problems may occur during embedding.

- HiJaak PRO beeps when starting up and opens to the Main menu rather than the Open dialog box.
- The File menu does not have an Update Write entry.
- Write gives the message "Unable to communicate with source application," when HiJaak PRO exits.

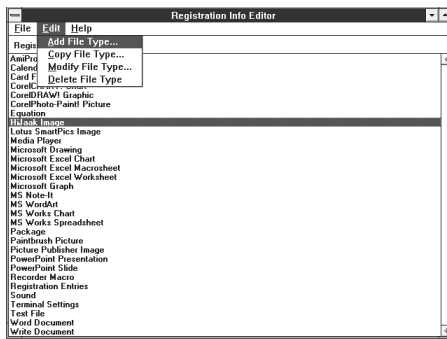
If these problems occur, then the Registration Database probably has an incorrect or corrupt entry for "HiJaak Image." You can fix this problem by using the RegEdit application provided with Windows.

## How to Add the Regedit Icon

- 1 In the Program Manager, click on the Accessories Group Window.
- 2 From the File menu, select New.
- 3 Click on Program Item and then on OK.
- 4 In the Description Field, type  
regedit
- 5 In the Command Line Field, type in your path to Windows 3.1 followed by REGEDIT.EXE. Click on OK. The Regedit icon will be added to your Accessories Group.

## How to Fix Your Registration Database Problems

- 1 Double-click on the Regedit icon to open the Registration Info Editor.



Step 3: Deleting HiJaak Image Entry

- 2 Click on HiJaak image.
- 3 Click on Edit and select Delete File Type. You will receive the message, "Are you sure you want to delete 'HiJaak Image' File Type?" Click on Yes. "HiJaak Image" will disappear from the list.
- 4 Repeat steps 2 and 3 if more than one "HiJaak Image" entry exists.
- 5 Click on File and select Exit.
- 6 Start and exit HiJaak PRO to re-register it for "HiJaak Image."

*Note: Registering for "HiJaak Image" is different from registering for file type, in that registering for "HiJaak Image" happens automatically whenever HiJaak PRO starts up.*

---

## Using TWAIN to Import Images from Your Graphics Hardware

**T**o import an image from your graphics hardware using the TWAIN interface, follow the instructions below.

### How to Select Your Hardware

- 1 Pull down the File menu and click on Select Source. You will see a list of all available TWAIN devices.
- 2 Click on the graphics hardware device from which you want to import an image. Click on OK.

### How to Import an Image Using TWAIN

- 1 Pull down the File menu and select Acquire. You will see an Acquire dialog box.
- 2 Acquire dialog boxes vary from device to device. See your graphics hardware documentation for more information.
- 3 Fill in the dialog box and click on OK. The image will import into HiJaak PRO.

# Technical Support

**S**upport for this version of HiJaak Pro is provided by your system vendor.

Before contacting the system vendor for support, please check to make sure that you have the following:

- Windows 3.1 or later in standard or enhanced mode
- Sufficient disk space
- Available system resources above 25%
- A supported graphics card, if you are using DOSCAP
- A supported fax card, if fax transmission is desired

When you call for technical support, if at all possible, be at your computer with your HiJaak PRO User Guide handy. In order to obtain quick and efficient help, please have the following information:

- Serial Numbers
- Any TSR's that are loaded, including network drivers
- Detailed description of the problem, including exact wording of any error messages

# Index

- A**
- Absolute Rotation [3-10](#)
  - Active Image
    - Defined [2-1](#)
  - All Colors to Black [3-23](#)
  
  - Ami Pro [8-5](#)
  - Application Interfaces [1-5](#)
  - Auto Palette [7-10](#)
  - Auto Scale [3-5](#)
  
**B**
    - Background Color [7-9](#)
    - Black and White
      - Reversing [3-24](#)
    - Border [5-3](#)
    - Brightness [3-19](#)
    - Buffer Size [7-3](#)  
**C**
    - Capturing
      - Windows Screen [5-1](#)
      - Area [5-5](#)
      - Cursor [5-3](#)
      - DOS Screen [6-1](#)
      - Hints [5-2](#)
      - Printer Output [6-4](#)
      - Pull-down menus [5-2](#)
      - Window or Object [5-5](#)
    - Center [2-7](#)
    - Center View [3-6](#)
    - Clipboard [2-9](#)
      - Select Clipboard Format [2-10](#)
    - Clone [3-7](#)
    - Closing a File [2-5](#)
    - Code Page 850 [1-5](#)
    - Color Reduction [7-10](#)
      - Diffuse [3-21](#)
      - Dither [3-21](#)
      - Halftone [3-21](#)
      - Snap [3-21](#)  
    - Colors [3-16](#)
      - Changing [3-17](#)
      - Colors to Black [3-23](#)
      - Custom [3-17](#)
      - Defining [3-17](#)
      - Editing [3-18](#)
      - Grayscale [3-23](#)
      - Invert [3-24](#)
      - Monochrome [3-23](#)
      - Number in Image [3-20](#)
      - Reverse Black and White [3-24](#)
    - Command Line
      - Conversion [4-11](#)
      - Open [2-11](#)
      - Print [2-12](#)
    - Compressed Files [6-2](#)
    - Contrast [3-19](#)
    - Contrast and Brightness [3-19](#)
    - Convert
      - How to Configure [7-3](#)
    - Convert File to File [4-10](#)
    - Converting a File [4-1](#)
      - Command Line Method [4-4, 4-11](#)
      - Convert Method [4-4, 4-10](#)
      - on Disk [4-8](#)
      - Open then Save as Method [4-4 - 4-5](#)
      - Options [4-12](#)
    - Copy [2-9](#)
    - Copy As [2-10](#)
    - Cropping [3-9](#)
    - Curve Quality [4-13, 7-11](#)
    - Custom Colors [3-17](#)
    - Cut [2-9](#)  
**D**
    - DDE [8-8](#)
    - Define Custom Colors [3-17](#)
    - Delayed Rendering [2-9](#)
    - Destination Processing Options [4-12](#)
    - Diffuse [3-21](#)
    - Distort Aspect [3-13](#)
    - Distort Aspect Ratio [3-12](#)
    - Distort to Frame [3-12](#)
    - Dither [3-21](#)



DOS Capture [6-1](#)  
DOSCAP Icon [6-3](#)  
Drag-Drop [8-12](#)

## E

Embedding [8-19](#)  
EMS Memory [6-2](#)

## F

Fast Print [2-7](#)  
Fax Card  
    Configuring [7-2](#)  
File Conversion [4-1](#)  
File Manager [8-11](#)  
File Viewer [8-11](#)  
Filters [8-2](#)  
Fit in Display [3-12](#)  
Fit in Display Width [3-12](#)  
Fit in Frame [3-11](#)  
Fit in Height [3-12](#)  
Fit in HiJaak Width [3-13](#)  
Fit in HiJaak Window [3-12](#)  
Fit in Width [3-12](#)  
Fixed Palette [7-10](#)  
Fonts  
    Changing in an Image [3-14](#)  
    Rasterize Text [6-2](#)  
Format Extensions [7-4](#)  
FreeHand [8-4](#)

## G

Gamma Correction [3-19](#)  
Ghosted [2-3](#)  
Graphics Card [6-2](#)  
Grayscale [3-23](#)

## H

Halftone [3-21](#)  
Hidden Objects [3-24](#)  
HiJaak Retrieve Macro [8-9](#)  
Histogram Equalization [3-20](#)  
HP PCL 4 Interpretation [1-5](#)

## I

Icons [8-15](#)  
Image Only [3-6](#)  
Import Filters [8-2](#)  
Incremental Rotation [3-10](#)  
Info  
    How to Use [2-5](#)  
Installation [1-4](#)  
    of Import Filters [1-11](#)  
    on a Workstation [1-10](#)  
Intensity Curve [4-12](#)  
Introduction [1-1](#)  
Invert [3-24](#)

## K

Keyboard Use [1-12](#)

## L

Linking [8-17](#)  
List Color Changes [3-18](#)

## M

Macro [8-9](#)  
Maximum Height [3-13](#)  
Maximum Width [3-13](#)  
Monochrome [3-23](#)

## N

Novell Netware [1-8](#)  
Number of Colors [3-20](#)

## O

Object Linking and Embedding [8-16](#)  
Off [3-5](#)  
OLE [8-16](#)  
Open  
    an Image [2-3](#)  
    from the Command Line [2-11](#)  
    Multiple Images [2-4](#)  
Optimize Palette [3-22](#)  
Options  
    Import [8-3](#)  
    Print [2-7](#)  
    Raster [4-13](#)  
    Vector [4-13](#)

<b>P</b>		<b>S</b>	
Page in Width	<a href="#">3-5</a>	Sample Graphics	<a href="#">1-5</a>
PageMaker	<a href="#">8-3</a>	Save As	<a href="#">2-5</a>
Palette Displayed	<a href="#">7-9</a>	Saving Changes	<a href="#">2-5</a>
Paste	<a href="#">2-10</a>	Scaling	<a href="#">3-11</a>
Persuasion	<a href="#">8-4</a>	Auto Scale	<a href="#">3-5</a>
Posterization	<a href="#">3-23</a>	Reset 1:1	<a href="#">3-4</a>
PowerPoint	<a href="#">8-7</a>	Screen Capture	
Preferences		Using the HiJaak Icon	<a href="#">5-6</a>
Background Color	<a href="#">7-9</a>	Screen Frequency	<a href="#">3-22</a>
Curve Quality	<a href="#">7-11</a>	Set Files	
Palette Displayed	<a href="#">7-9</a>	Defaults	<a href="#">7-8</a>
Reduction Method	<a href="#">7-10</a>	How to Load	<a href="#">7-7</a>
Setting	<a href="#">7-8</a>	How to Save	<a href="#">7-7</a>
Units	<a href="#">7-11</a>	Loading and Saving	<a href="#">7-6</a>
Print Trap	<a href="#">6-1, 6-4</a>	Setup	
Printer		Changing	<a href="#">7-1</a>
Setup	<a href="#">1-7</a>	Preferences	<a href="#">7-8</a>
Printing		Show Cursor	<a href="#">5-3</a>
a View	<a href="#">2-6</a>	Size, changing	<a href="#">3-11</a>
Fast Print	<a href="#">2-7</a>	Smoothing	<a href="#">3-13</a>
From the Command line	<a href="#">2-12</a>	Snap	<a href="#">3-21</a>
In Batch	<a href="#">2-12</a>	Stroke Fonts	<a href="#">4-13</a>
Options	<a href="#">2-7</a>	System Requirements	<a href="#">1-4</a>
Position	<a href="#">2-7</a>		
Size	<a href="#">2-7 - 2-8</a>		
with Drag-Drop	<a href="#">8-14</a>		
<b>R</b>		<b>T</b>	
Raster		Technical Notes	<a href="#">1-7</a>
Defined	<a href="#">4-1</a>	Technical Support	<a href="#">9-1</a>
Processing Options	<a href="#">4-13</a>	Temp Directory	<a href="#">6-2, 7-3</a>
Rasterize Text	<a href="#">6-2</a>	TWAIN	<a href="#">8-22</a>
Reduction Method	<a href="#">3-21, 7-10</a>		
Regedit	<a href="#">8-21</a>	<b>U</b>	
Registering HiJaak	<a href="#">7-5</a>	Undo	<a href="#">3-16</a>
Release Notes	<a href="#">1-6</a>	Units	<a href="#">3-11, 4-12</a>
Removing HiJaak PRO	<a href="#">1-11</a>	Default	<a href="#">7-11</a>
Resize	<a href="#">3-11</a>		
Resolution		<b>V</b>	
Horizontal	<a href="#">3-13</a>	Vector	
Vertical	<a href="#">3-14</a>	Defined	<a href="#">4-1</a>
Reveal Background Color Objects	<a href="#">3-24</a>	Processing Options	<a href="#">4-13</a>
Reverse Black and White	<a href="#">3-24</a>	View	
Rotate	<a href="#">3-10</a>	Centering	<a href="#">3-6</a>
Running HiJaak PRO	<a href="#">1-11</a>	Changing	<a href="#">3-2</a>
		Cropping	<a href="#">3-9</a>
		Editing	<a href="#">3-8</a>

Multi-page Images	<a href="#">3-8</a>
Printing	<a href="#">2-6</a>
Using Drag-Drop	<a href="#">8-12</a>

## W

WINDIR	<a href="#">6-6</a>
Windows Capture	
Capture Menu Startup	<a href="#">5-2</a>
Hints	<a href="#">5-2</a>
Hotkey Startup	<a href="#">5-1</a>
Hotkeys how to	<a href="#">5-4</a>
Icon Startup	<a href="#">5-1</a>
Windows Clipboard Support	<a href="#">2-9</a>
Word for Windows	<a href="#">8-6</a>
WordPerfect	<a href="#">8-8</a>
Write Files	<a href="#">1-7</a>

## Z

Zoom 1 to 1 (100%)	<a href="#">3-4</a>
Zooming in	<a href="#">3-3</a>
Zooming Out	<a href="#">3-4</a>